

## CDC123 RABBIT MAB

**Cat.#:** N263261

**Product Name:** Anti-CDC123 Rabbit Monoclonal Antibody

**Synonyms:** C10orf7; CDC123; Cell division cycle 123; D123; HT 1080; PZ32

**UNIPROT ID:** O75794

**Background:** Required for S phase entry of the cell cycle.

**Immunogen:** A synthetic peptide of human CDC123

**Applications:** WB,IP

**Recommended Dilutions:** WB: 1/500-1/1000 IP: 1/20

**Host Species:** Rabbit

**Clonality:** Rabbit Monoclonal

**Clone ID:** R06-8B6

**MW:** Calculated MW: 39 kDa; Observed MW: 39 kDa

**Isotype:** IgG

**Purification:** Affinity Purified

**Species Reactivity:** Human

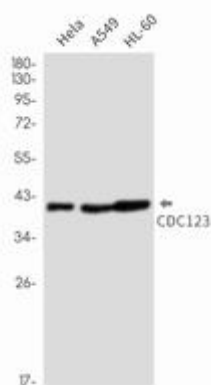
**Conjugation:** Unconjugated

**Modification:** Unmodified

**Constituents:** PBS (without Mg<sup>2+</sup> and Ca<sup>2+</sup>), pH 7.3 containing 50% glycerol, 0.5% BSA and 0.02% sodium azide

**Research Areas:** Cell Biology

**Storage & Shipping:** Store at -20°C. Avoid repeated freezing and thawing



Western blot analysis of CDC123 in Hela, A549, HL-60 lysates using CDC123 antibody.