

## CDA RABBIT PAB

**Cat.#:** S218451

**Product Name:** Anti-CDA Rabbit Polyclonal Antibody

**Synonyms:** CDD

**UNIPROT ID:** P32320 (Gene Accession - BC054036 )

**Background:** This gene encodes an enzyme involved in pyrimidine salvaging. The encoded protein forms a homotetramer that catalyzes the irreversible hydrolytic deamination of cytidine and deoxycytidine to uridine and deoxyuridine, respectively. It is one of several deaminases responsible for maintaining the cellular pyrimidine pool. Mutations in this gene are associated with decreased sensitivity to the cytosine nucleoside analogue cytosine arabinoside used in the treatment of certain childhood leukemias.

**Immunogen:** Fusion protein of human CDA

**Applications:** ELISA, WB, IHC

**Recommended Dilutions:** IHC: 100–300;WB: 500–2000;ELISA: 5000–10000

**Host Species:** Rabbit

**Clonality:** Rabbit Polyclonal

**Isotype:** Immunogen-specific rabbit IgG

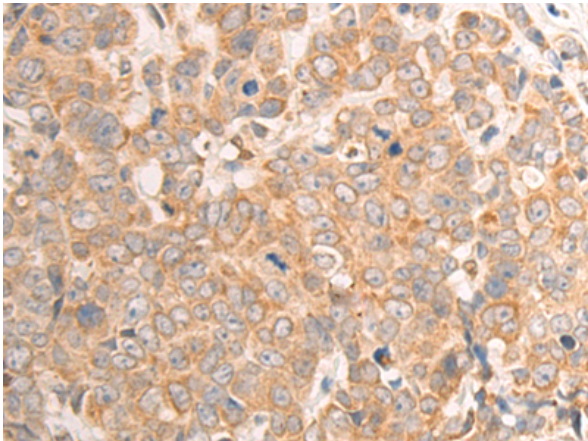
**Purification:** Antigen affinity purification

**Species Reactivity:** Human, Mouse

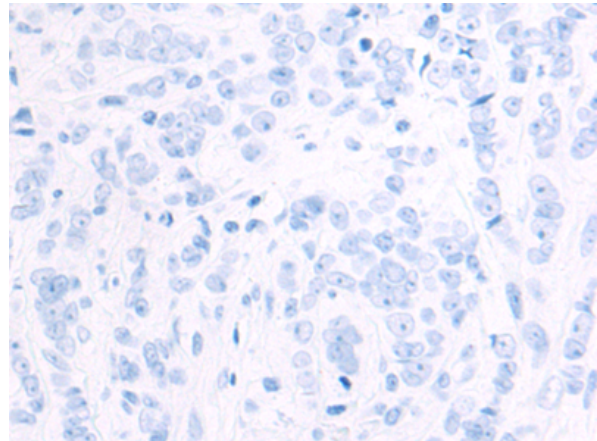
**Constituents:** PBS (without Mg<sup>2+</sup> and Ca<sup>2+</sup>), pH 7.4, 150 mM NaCl, 0.05% Sodium Azide and 40% glycerol

**Research Areas:** Epigenetics and Nuclear Signaling

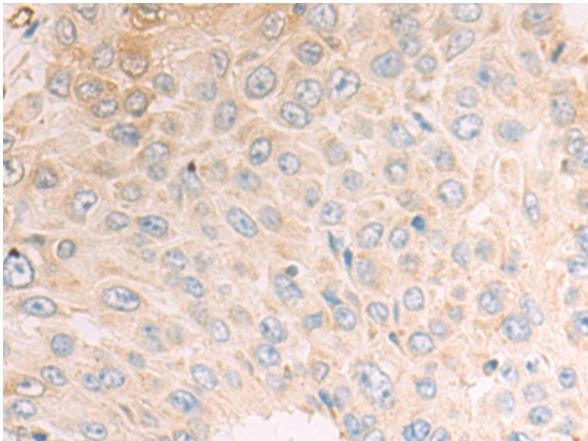
**Storage & Shipping:** Store at -20°C. Avoid repeated freezing and thawing



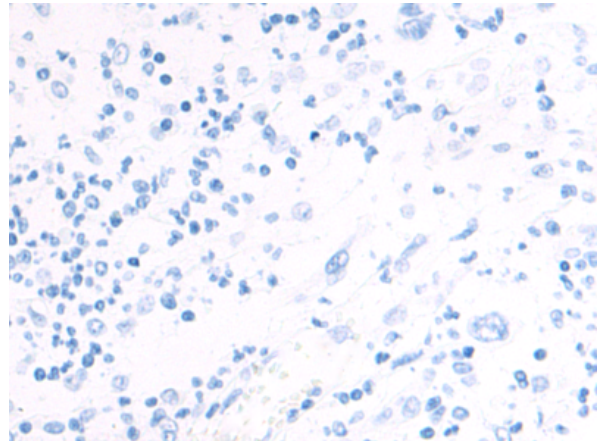
Immunohistochemistry analysis of paraffin embedded Human breast cancer tissue using 218451(CDA Antibody) at a dilution of 1/100(Cytoplasm).



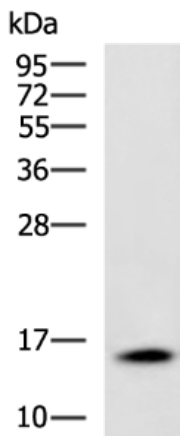
In comparison with the IHC on the left, the same paraffin-embedded Human breast cancer tissue is first treated with the fusion protein and then with 218451(Anti-CDA Antibody) at dilution 1/100.



The image on the left is immunohistochemistry of paraffin-embedded Human esophagus cancer tissue using 218451(Anti-CDA Antibody) at a dilution of 1/100.



In comparison with the IHC on the left, the same paraffin-embedded Human esophagus cancer tissue is first treated with fusion protein and then with D224481(Anti-CDA Antibody) at dilution 1/100.



Gel: 12%SDS-PAGE, Lysate: 40 µg;  
Lane: LO2 cell lysate;  
Primary antibody: 218451(CDA Antibody) at dilution 1/1000;  
Secondary antibody: HRP-conjugated Goat anti rabbit IgG at 1/5000 dilution;  
Exposure time: 10 seconds



# Product Description

Pioneering GTPase and Oncogene Product Development since 2010

---