

## CDA RABBIT MAB

**Cat.#:** N262009

**Product Name:** Anti-CDA Rabbit Monoclonal Antibody

**Synonyms:** cytidine deaminase; CDD

**UNIPROT ID:** P32320

**Background:** This enzyme scavenges exogenous and endogenous cytidine and 2'-deoxycytidine for UMP synthesis.

**Immunogen:** Recombinant protein of human CDA

**Applications:** WB,IHC-P

**Recommended Dilutions:** WB: 1/500-1/1000 IHC: 1/50-1/100

**Host Species:** Rabbit

**Clonality:** Rabbit Monoclonal

**Clone ID:** R08-4C9

**MW:** Calculated MW: 16 kDa; Observed MW: 16 kDa

**Isotype:** IgG

**Purification:** Affinity Purified

**Species Reactivity:** Human

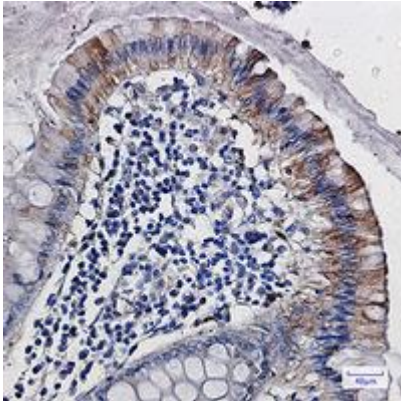
**Conjugation:** Unconjugated

**Modification:** Unmodified

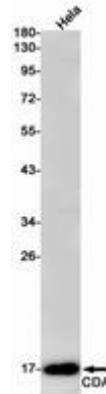
**Constituents:** PBS (without Mg<sup>2+</sup> and Ca<sup>2+</sup>), pH 7.3 containing 50% glycerol, 0.5% BSA and 0.02% sodium azide

**Research Areas:** Epigenetics and Nuclear Signaling

**Storage & Shipping:** Store at -20°C. Avoid repeated freezing and thawing



Immunohistochemistry analysis of paraffin-embedded Human colon cancer using CDA antibody. High- pressure and temperature Sodium Citrate pH 6.0 was used for antigen retrieval.



Western blot analysis of CDA in Sodium Hela lysates using CDA antibody.