

CD85F RABBIT PAB

Cat.#: N225186

Product Name: Anti-CD85f Rabbit pAb

Synonyms: LILRA5; ILT11; LILRB7; LIR9; Leukocyte immunoglobulin-like receptor subfamily A member 5; CD85 antigen-like family member F; Immunoglobulin-like transcript 11; ILT-11; Leukocyte immunoglobulin-like receptor 9; LIR-9; CD85f

UNIPROT ID: A6NI73

Background: May play a role in triggering innate immune responses.

Immunogen: The antiserum was produced against synthesized peptide derived from the Internal region of human LILRA5. AA range:141-190

Applications: WB,ELISA

Recommended Dilutions: WB: 1/500-1/1000 ELISA: 1/10000

Host Species: Rabbit

Clonality: Rabbit Polyclonal

Clone ID: -

MW: Calculated MW: 33 kDa; Observed MW: 33 kDa

Isotype: IgG

Purification: Affinity Purified

Species Reactivity: Human

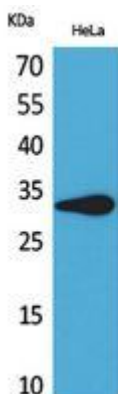
Conjugation: Unconjugated

Modification: Unmodified

Constituents: PBS (without Mg²⁺ and Ca²⁺), pH 7.3 containing 50% glycerol, 0.5% BSA and 0.02% sodium azide

Research Areas: Immunology

Storage & Shipping: Store at -20°C. Avoid repeated freezing and thawing



Western blot analysis of CD85f in HeLa lysates using CD85f antibody.



Product Description

Pioneering GTPase and Oncogene Product Development since 2010
