

## CD8 ALPHA RABBIT MAB

**Cat.#:** N261738

**Product Name:** Anti-CD8 alpha Rabbit Monoclonal Antibody

**Synonyms:** CD8A; MAL; T-cell surface glycoprotein CD8 alpha chain; T-lymphocyte differentiation antigen T8/Leu-2; CD antigen CD8a

**UNIPROT ID:** P01732

**Background:** Identifies cytotoxic/suppressor T-cells that interact with MHC class I bearing targets. CD8 is thought to play a role in the process of T-cell mediated killing. CD8 alpha chains binds to class I MHC molecules alpha-3 domains.

**Immunogen:** A synthetic peptide of human CD8

**Applications:** WB,IHC-P

**Recommended Dilutions:** WB: 1/500-1/1000 IHC: 1/50-1/100

**Host Species:** Rabbit

**Clonality:** Rabbit Monoclonal

**Clone ID:** R09-8E7

**MW:** Calculated MW: 26 kDa; Observed MW: 29 kDa

**Isotype:** IgG

**Purification:** Affinity Purified

**Species Reactivity:** Human,Hamster

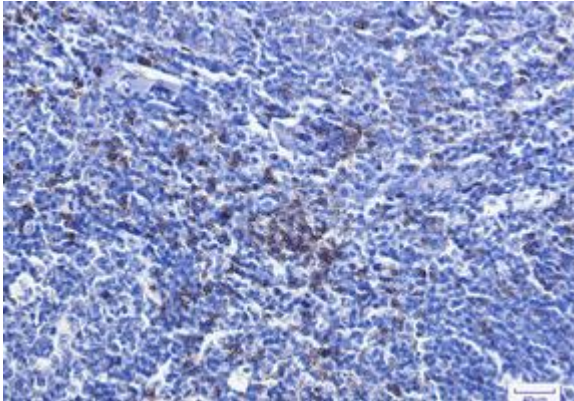
**Conjugation:** Unconjugated

**Modification:** Unmodified


**Constituents:** PBS (without Mg<sup>2+</sup> and Ca<sup>2+</sup>), pH 7.3 containing 50% glycerol, 0.5% BSA and 0.02% sodium azide

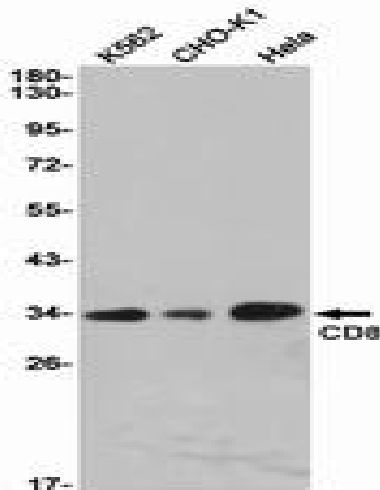
**Research Areas:** Immunology

**Storage & Shipping:** Store at -20°C. Avoid repeated freezing and thawing



Immunohistochemistry analysis of paraffin-embedded Human tonsil using CD8 antibody. High-pressure and temperature Sodium Citrate pH 6.0 was used for antigen retrieval.

 Western blot analysis of CD8 in THP-1 lysates using CD8 alpha antibody.



Western blot analysis of CD8 in K562, CHO-K1, HeLa lysates using CD8 antibody.