

## CD70 RABBIT PAB

**Cat.#:** S221123

**Product Name:** Anti-CD70 Rabbit Polyclonal Antibody

**Synonyms:** CD27L; LPFS3; CD27-L; CD27LG; TNFSF7; TNLG8A

**UNIPROT ID:** P32970 (Gene Accession - NP\_001243 )

**Background:** The protein encoded by this gene is a cytokine that belongs to the tumor necrosis factor (TNF) ligand family. This cytokine is a ligand for TNFRSF27/CD27. It is a surface antigen on activated, but not on resting, T and B lymphocytes. It induces proliferation of costimulated T cells, enhances the generation of cytolytic T cells, and contributes to T cell activation. This cytokine is also reported to play a role in regulating B-cell activation, cytotoxic function of natural killer cells, and immunoglobulin synthesis.

**Immunogen:** Synthetic peptide of human CD70

**Applications:** ELISA, WB, IHC

**Recommended Dilutions:** IHC: 50-200;WB: 500-2000;ELISA: 5000-10000

**Host Species:** Rabbit

**Clonality:** Rabbit Polyclonal

**Isotype:** Immunogen-specific rabbit IgG

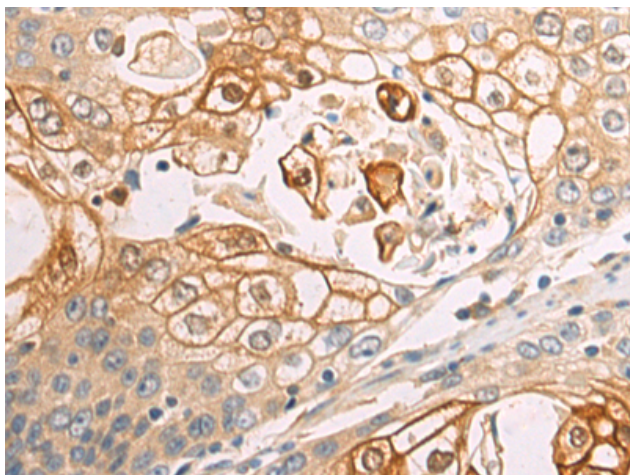
**Purification:** Antigen affinity purification

**Species Reactivity:** Human, Mouse

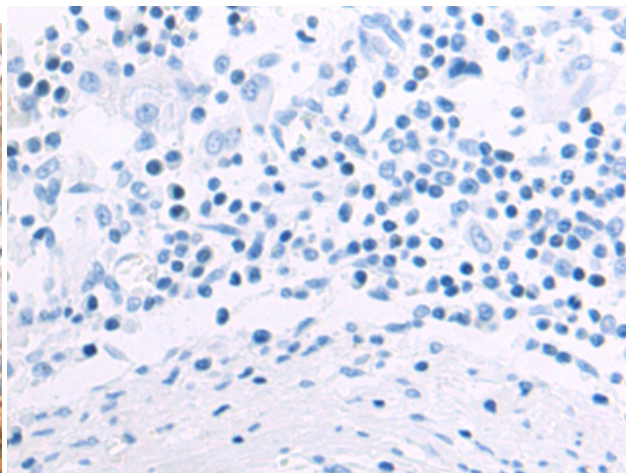
**Constituents:** PBS (without Mg<sup>2+</sup> and Ca<sup>2+</sup>), pH 7.4, 150 mM NaCl, 0.05% Sodium Azide and 40% glycerol

**Research Areas:** Cancer, Immunology, Stem Cells

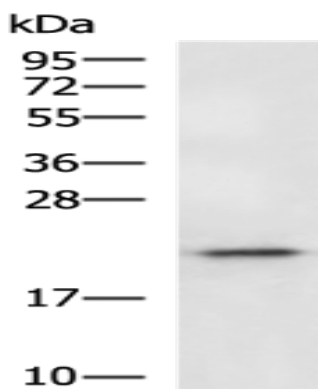
**Storage & Shipping:** Store at -20°C. Avoid repeated freezing and thawing



Immunohistochemistry analysis of paraffin embedded Human esophagus cancer tissue using 221123(CD70 Antibody) at a dilution of 1/60(Cytoplasm and Cell membrane).



In comparison with the IHC on the left, the same paraffin-embedded Human esophagus cancer tissue is first treated with the synthetic peptide and then with 221123(Anti-CD70 Antibody) at dilution 1/60.



Gel: 12%SDS-PAGE, Lysate: 40 µg;  
Lane: A172 cell lysate;  
Primary antibody: 221123(CD70 Antibody) at dilution 1/1000;  
Secondary antibody: HRP-conjugated Goat anti rabbit IgG at 1/5000 dilution;  
Exposure time: 2 minutes