

CD7 RABBIT PAB

Cat.#: N225063

Product Name: Anti-CD7 Rabbit pAb

Synonyms: CD7; T-cell antigen CD7; GP40; T-cell leukemia antigen; T-cell surface antigen Leu-9; TP41; CD7

UNIPROT ID: P09564

Background: Not yet known.

Immunogen: The antiserum was produced against synthesized peptide derived from the Internal region of human CD7. AA range:51-100

Applications: WB,IHC-P,ELISA

Recommended Dilutions: WB: 1/500-1/1000 IHC: 1/50-1/100 ELISA: 1/10000

Host Species: Rabbit

Clonality: Rabbit Polyclonal

Clone ID: -

MW: Calculated MW: 25 kDa; Observed MW: 25 kDa

Isotype: IgG

Purification: Affinity Purified

Species Reactivity: Human

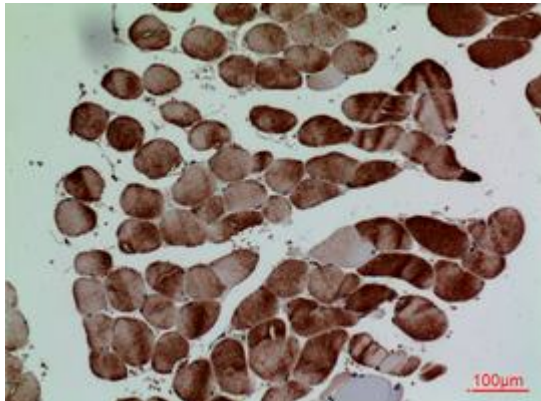
Conjugation: Unconjugated

Modification: Unmodified

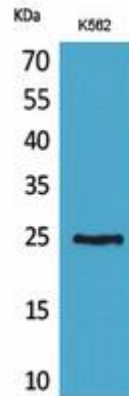
Constituents: PBS (without Mg²⁺ and Ca²⁺), pH 7.3 containing 50% glycerol, 0.5% BSA and 0.02% sodium azide

Research Areas: Immunology

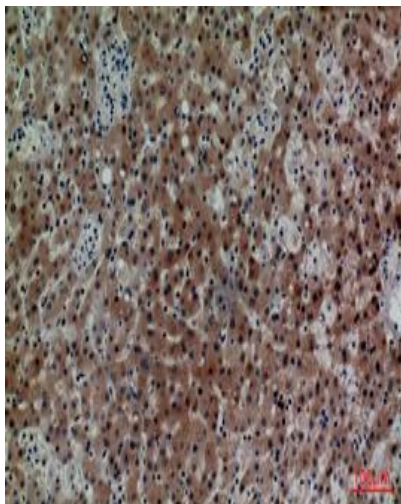
Storage & Shipping: Store at -20°C. Avoid repeated freezing and thawing



Immunohistochemistry analysis of paraffin-embedded Human muscle using CD7 antibody. High-pressure and temperature Sodium Citrate pH 6.0 was used for antigen retrieval.



Western blot analysis of CD7 in Sodium K562 lysates using CD7 antibody.



Immunohistochemistry analysis of paraffin-embedded Human liver using CD7 antibody. High-pressure and temperature Sodium Citrate pH 6.0 was used for antigen retrieval.