

CD68 RABBIT PAB

Cat.#: S220116

Product Name: Anti-CD68 Rabbit Polyclonal Antibody

Synonyms: GP110; LAMP4; SCARD1

UNIPROT ID: P34810 (Gene Accession - NP_001242)

Background: This gene encodes a 110-kD transmembrane glycoprotein that is highly expressed by human monocytes and tissue macrophages. It is a member of the lysosomal/endosomal-associated membrane glycoprotein (LAMP) family. The protein primarily localizes to lysosomes and endosomes with a smaller fraction circulating to the cell surface. It is a type I integral membrane protein with a heavily glycosylated extracellular domain and binds to tissue- and organ-specific lectins or selectins. The protein is also a member of the scavenger receptor family. Scavenger receptors typically function to clear cellular debris, promote phagocytosis, and mediate the recruitment and activation of macrophages. Alternative splicing results in multiple transcripts encoding different isoforms.

Immunogen: Synthetic peptide of human CD68

Applications: ELISA, IHC

Recommended Dilutions: IHC: 50-200; ELISA: 2000-5000

Host Species: Rabbit

Clonality: Rabbit Polyclonal

Isotype: Immunogen-specific rabbit IgG

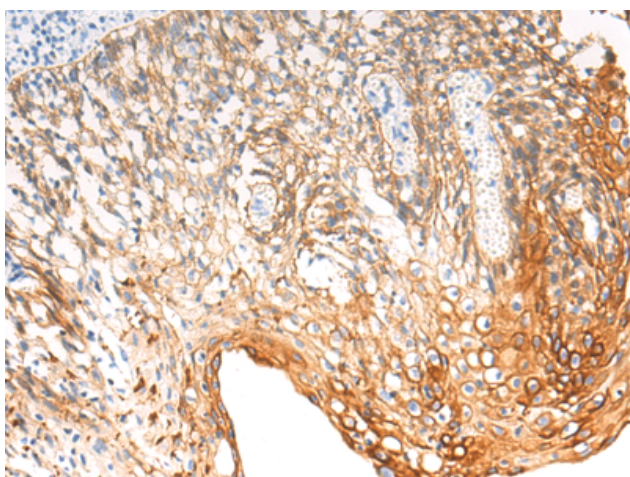
Purification: Antigen affinity purification

Species Reactivity: Human

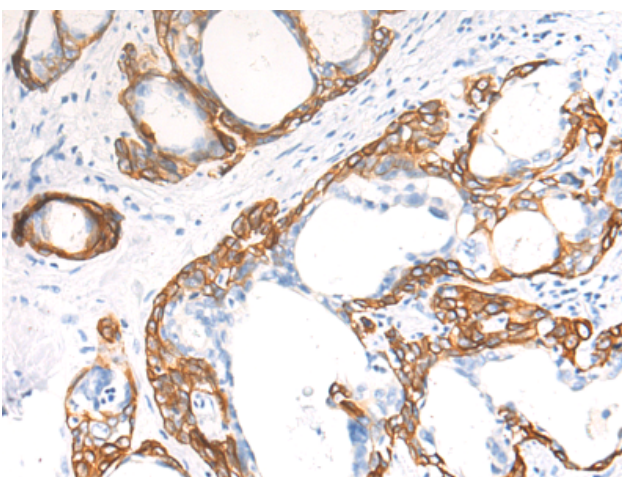
Constituents: PBS (without Mg²⁺ and Ca²⁺), pH 7.4, 150 mM NaCl, 0.05% Sodium Azide and 40% glycerol

Research Areas: Immunology

Storage & Shipping: Store at -20°C. Avoid repeated freezing and thawing



Immunohistochemistry analysis of paraffin-embedded Human tonsil tissue using 220116 (CD68 Antibody) at a dilution of 1/30 (Cell membrane).



Immunohistochemistry analysis of paraffin-embedded Human cervical cancer tissue using 220116 (Anti-CD68 Antibody) at a dilution of 1/30.



Product Description

Pioneering GTPase and Oncogene Product Development since 2010
