

## CD66A/B/C RABBIT PAB

**Cat.#:** N225085

**Product Name:** Anti-CD66a/b/c Rabbit pAb

**Synonyms:** BGP; BGPI; NCA; CGM6

**UNIPROT ID:** P13688/P40199/P31997

**Background:** Plays a role as coinhibitory receptor in immune response, insulin action and functions also as an activator during angiogenesis.

**Immunogen:** Synthetic peptide from human protein at AA range: 130-190

**Applications:** IHC-P,ELISA

**Recommended Dilutions:** IHC: 1/50-1/100 ELISA: 1/10000

**Host Species:** Rabbit

**Clonality:** Rabbit Polyclonal

**Clone ID:** -

**MW:** -

**Isotype:** IgG

**Purification:** Affinity Purified

**Species Reactivity:** Human

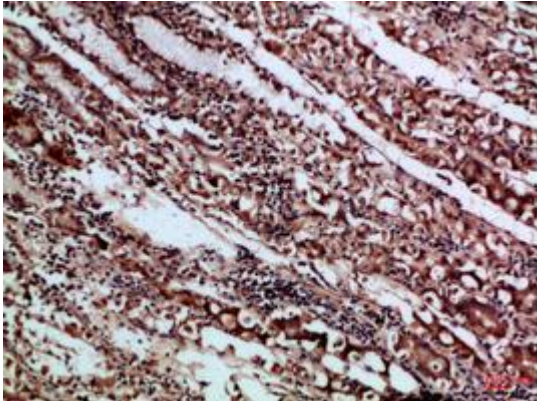
**Conjugation:** Unconjugated

**Modification:** Unmodified

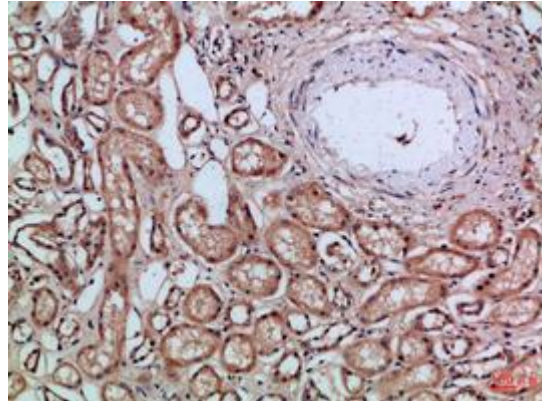
**Constituents:** PBS (without Mg<sup>2+</sup> and Ca<sup>2+</sup>), pH 7.3 containing 50% glycerol, 0.5% BSA and 0.02% sodium azide

**Research Areas:** Immunology

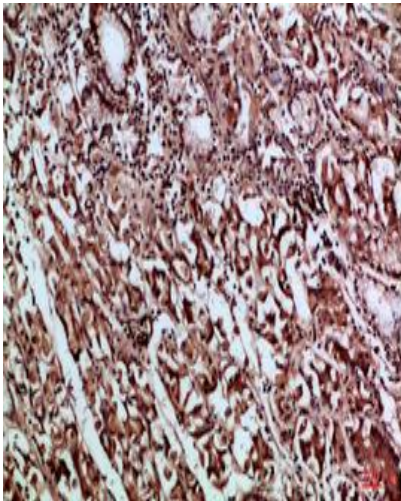
**Storage & Shipping:** Store at -20°C. Avoid repeated freezing and thawing



Immunohistochemical analysis of paraffin-embedded Human tonsils using CD66a/b/c antibody. High-pressure and temperature Sodium Citrate pH 6.0 was used for antigen retrieval.



Immunohistochemistry analysis of paraffin-embedded Human kidney using CD66a/b/c antibody. High-pressure and temperature Sodium Citrate pH 6.0 was used for antigen retrieval.



Immunohistochemistry analysis of paraffin-embedded Human stomach using CD66a/b/c antibody. High-pressure and temperature Sodium Citrate pH 6.0 was used for antigen retrieval.