

## CD6(1G6) IGG1 CHIMERIC MAB

目录: 28568

产品名称: CD6(1G6) IgG1 Chimeric Monoclonal Antibody

基因符号: TP120

描述: CD6 antibody(1G6) IgG1 Chimeric Monoclonal Antibody

背景: This gene encodes a protein found on the outer membrane of T-lymphocytes as well as some other immune cells. The encoded protein contains three scavenger receptor cysteine-rich (SRCR) domains and a binding site for an activated leukocyte cell adhesion molecule. The gene product is important for continuation of T cell activation. This gene may be associated with susceptibility to multiple sclerosis (PMID: 19525953, 21849685). Multiple transcript variants encoding different isoforms have been found for this gene. [provided by RefSeq, Dec 2011]

经过测试的应用: Flow Cyt

推荐稀释度: Flow Cyt 1/100

种属反应性: Rabbit

亚型: Rabbit/Human Fc chimeric IgG1

纯化: Purified from cell culture supernatant by affinity chromatography

种属反应性: Human CD6

成分: Lyophilized from sterile PBS, pH 7.4. 5 % – 8% trehalose is added as protectants before lyophilization.

**Storage & Shipping:** Store at -20°C to -80°C for 12 months in lyophilized form. After reconstitution, if not intended for use within a month, aliquot and store at -80°C (Avoid repeated freezing and thawing).

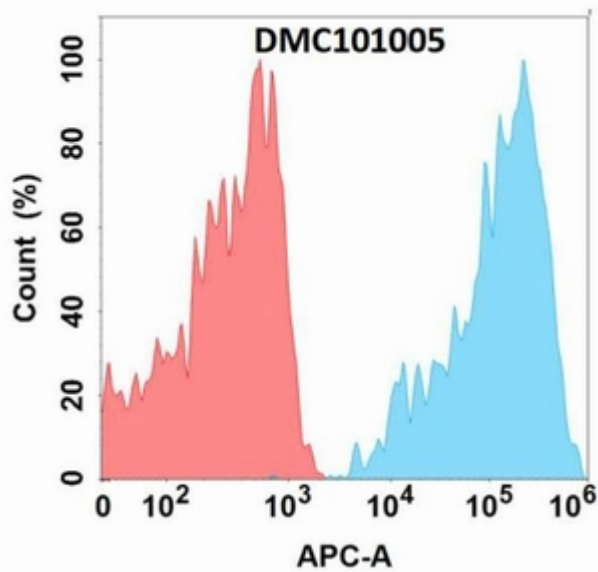


Figure 1. Flow cytometry analysis with CD6 (1G6) mAb on Expi293 cells transfected with human CD6 (Blue histogram) or Expi293 transfected with irrelevant protein (Red histogram).