

CD52 RABBIT PAB

Cat.#: S222367

Product Name: Anti-CD52 Rabbit Polyclonal Antibody

Synonyms: HE5; CDW52; EDDM5

UNIPROT ID: P31358 (Gene Accession - NP_001794)

Background: May play a role in carrying and orienting carbohydrate, as well as having a more specific role.

Immunogen: Synthetic peptide of human CD52

Applications: ELISA, IHC

Recommended Dilutions: IHC: 50-200; ELISA: 5000-10000

Host Species: Rabbit

Clonality: Rabbit Polyclonal

Isotype: Immunogen-specific rabbit IgG

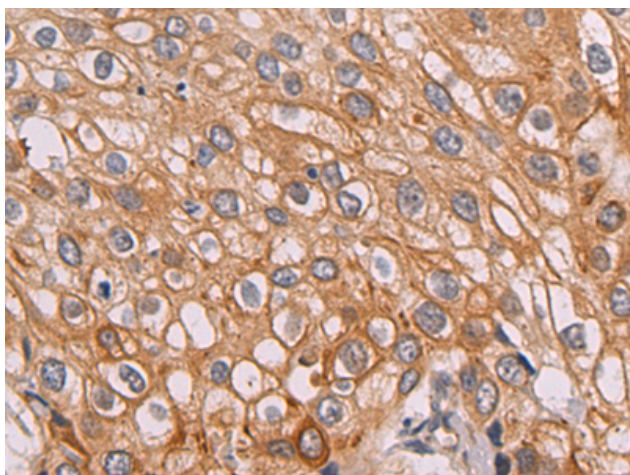
Purification: Antigen affinity purification

Species Reactivity: Human

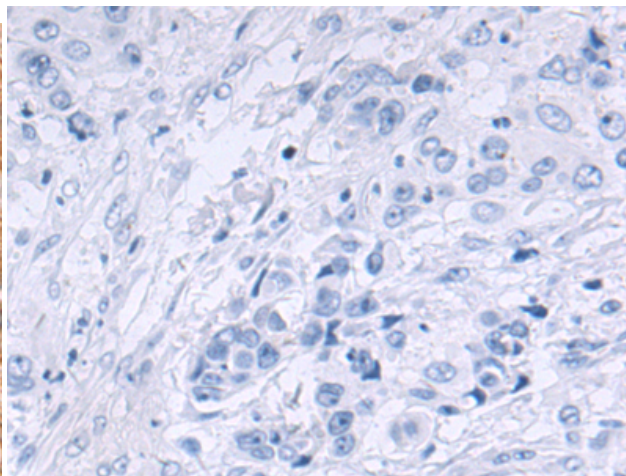
Constituents: PBS (without Mg²⁺ and Ca²⁺), pH 7.4, 150 mM NaCl, 0.05% Sodium Azide and 40% glycerol

Research Areas: Immunology

Storage & Shipping: Store at -20°C. Avoid repeated freezing and thawing



Immunohistochemistry analysis of paraffin embedded Human cervical cancer tissue using 222367(CD52 Antibody) at a dilution of 1/50(Cell membrane).



In comparison with the IHC on the left, the same paraffin-embedded Human cervical cancer tissue is first treated with the synthetic peptide and then with 222367(Anti-CD52 Antibody) at dilution 1/50.