

CD5 RABBIT PAB

Cat.#: S221699

Product Name: Anti-CD5 Rabbit Polyclonal Antibody

Synonyms: TI; LEU1

UNIPROT ID: P06127 (Gene Accession - NP_055022)

Background: CD5 (also designated Lyt-1) has been identified as a transmembrane glycoprotein that is expressed on 70% of normal peripheral blood lymphocytes and on virtually all T lymphocytes in thymus and peripheral blood. Activation of T cells through the T cell receptor (TCR) results in tyrosine phosphorylation of CD5, and the absence of CD5 renders T cells hyper-responsive to TCR-mediated activation. CD5 associates with the TCR/ CD3- ζ chain and with the Src family kinase Lck p56. In vitro studies have shown a 10- to 15-fold increase in the kinase activity of Lck bound to CD5. The B cell antigen, CD72, serves as a receptor for CD5. The consequence of CD5 binding to its cognate receptor is still in question and likely plays a role in thymic selection. May act as a receptor in regulating T-cell proliferation.

Immunogen: Synthetic peptide of human CD5

Applications: ELISA, IHC

Recommended Dilutions: IHC: 30-150; ELISA: 5000-10000

Host Species: Rabbit

Clonality: Rabbit Polyclonal

Isotype: Immunogen-specific rabbit IgG

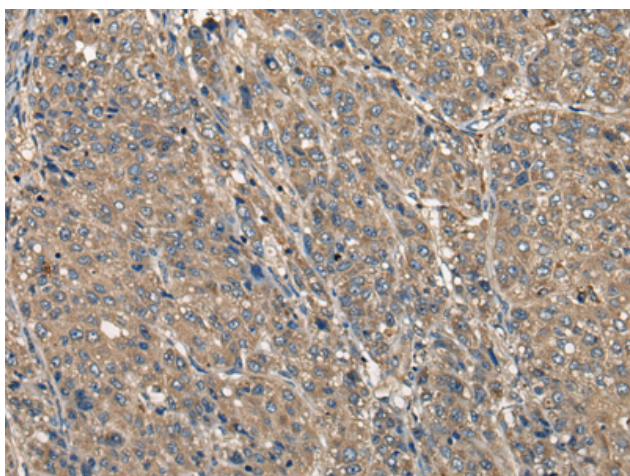
Purification: Antigen affinity purification

Species Reactivity: Human, Mouse, Rat

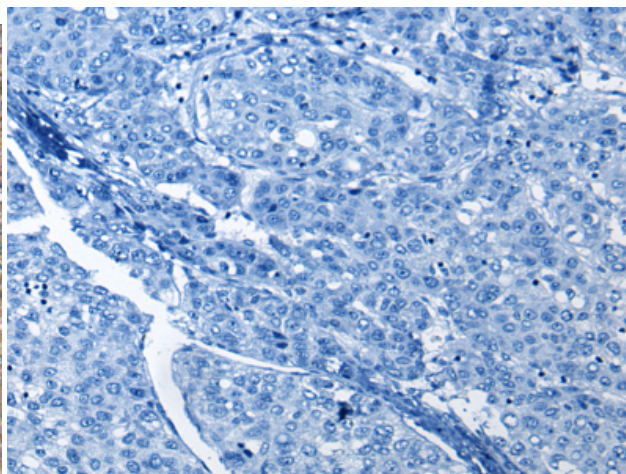
Constituents: PBS (without Mg²⁺ and Ca²⁺), pH 7.4, 150 mM NaCl, 0.05% Sodium Azide and 40% glycerol

Research Areas: Immunology, Stem Cells

Storage & Shipping: Store at -20°C. Avoid repeated freezing and thawing



Immunohistochemistry analysis of paraffin embedded Human liver cancer tissue using 221699(CD5 Antibody) at a dilution of 1/30(Cell membrane).



In comparison with the IHC on the left, the same paraffin-embedded Human liver cancer tissue is first treated with the synthetic peptide and then with 221699(Anti-CD5 Antibody) at dilution 1/30.



Product Description

Pioneering GTPase and Oncogene Product Development since 2010
