

## CD48 RABBIT PAB

**Cat.#:** S218844

**Product Name:** Anti-CD48 Rabbit Polyclonal Antibody

**Synonyms:** BCMI; BLAST; hCD48; mCD48; BLAST1; SLAMF2; MEM-102

**UNIPROT ID:** P09326 (Gene Accession - BC016182 )

**Background:** This gene encodes a member of the CD2 subfamily of immunoglobulin-like receptors which includes SLAM (signaling lymphocyte activation molecules) proteins. The encoded protein is found on the surface of lymphocytes and other immune cells, dendritic cells and endothelial cells, and participates in activation and differentiation pathways in these cells. The encoded protein does not have a transmembrane domain, however, but is held at the cell surface by a GPI anchor via a C-terminal domain which maybe cleaved to yield a soluble form of the receptor. Multiple transcript variants encoding different isoforms have been found for this gene.

**Immunogen:** Fusion protein of human CD48

**Applications:** ELISA, WB, IHC

**Recommended Dilutions:** IHC: 50-300;WB: 500-2000;ELISA: 5000-10000

**Host Species:** Rabbit

**Clonality:** Rabbit Polyclonal

**Isotype:** Immunogen-specific rabbit IgG

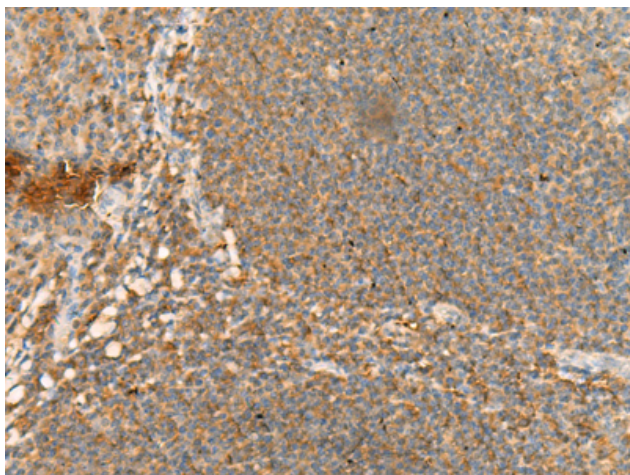
**Purification:** Antigen affinity purification

**Species Reactivity:** Human

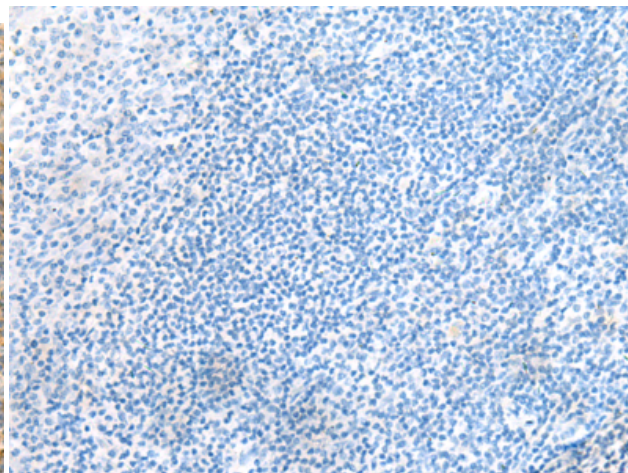
**Constituents:** PBS (without Mg<sup>2+</sup> and Ca<sup>2+</sup>), pH 7.4, 150 mM NaCl, 0.05% Sodium Azide and 40% glycerol

**Research Areas:** Immunology

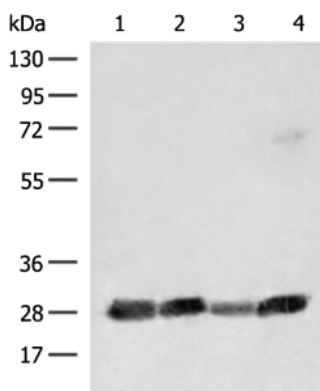
**Storage & Shipping:** Store at -20°C. Avoid repeated freezing and thawing



Immunohistochemistry analysis of paraffin embedded Human tonsil tissue using 218844(CD48 Antibody) at a dilution of 1/95(Cell membrane).



In comparison with the IHC on the left, the same paraffin-embedded Human tonsil tissue is first treated with the fusion protein and then with 218844(Anti-CD48 Antibody) at dilution 1/95.



Gel: 8%SDS-PAGE, Lysate: 40  $\mu$ g;  
 Lane 1-4: 231, K562, Jurkat and Raji cell lysates;  
 Primary antibody: 218844(CD48 Antibody) at dilution 1/550;  
 Secondary antibody: Goat anti rabbit IgG at 1/8000 dilution;  
 Exposure time: 10 seconds