

CD47 RABBIT PAB

Cat.#: S220442

Product Name: Anti-CD47 Rabbit Polyclonal Antibody

Synonyms: IAP; OA3; MER6

UNIPROT ID: Q08722 (Gene Accession - NP_001768)

Background: This gene encodes a membrane protein, which is involved in the increase in intracellular calcium concentration that occurs upon cell adhesion to extracellular matrix. The encoded protein is also a receptor for the C-terminal cell binding domain of thrombospondin, and it may play a role in membrane transport and signal transduction. This gene has broad tissue distribution, and is reduced in expression on Rh erythrocytes. Alternatively spliced transcript variants have been found for this gene.

Immunogen: Synthetic peptide of human CD47

Applications: ELISA, WB, IHC

Recommended Dilutions: IHC: 50-200;WB: 500-2000;ELISA: 1000-5000

Host Species: Rabbit

Clonality: Rabbit Polyclonal

Isotype: Immunogen-specific rabbit IgG

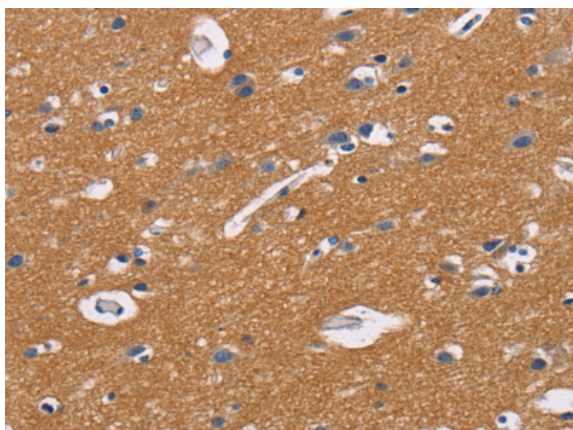
Purification: Antigen affinity purification

Species Reactivity: Human

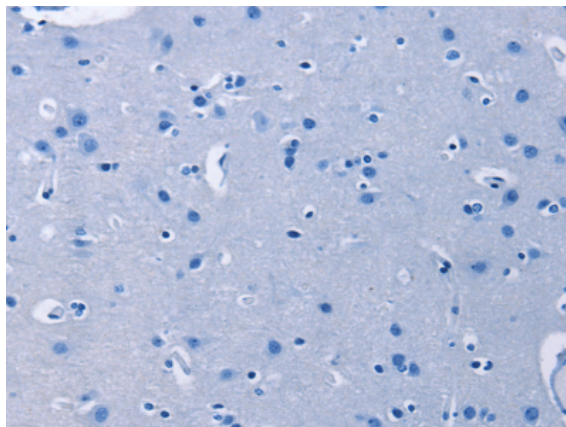
Constituents: PBS (without Mg²⁺ and Ca²⁺), pH 7.4, 150 mM NaCl, 0.05% Sodium Azide and 40% glycerol

Research Areas: Cancer, Immunology

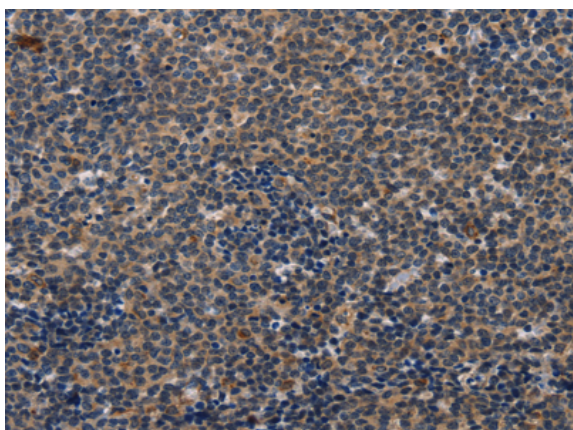
Storage & Shipping: Store at -20°C. Avoid repeated freezing and thawing



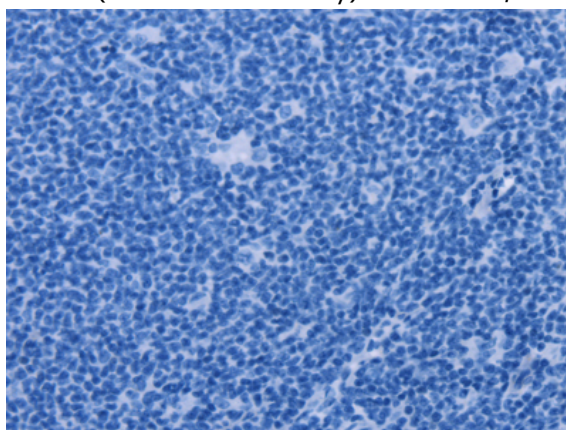
Immunohistochemistry analysis of paraffin embedded Human brain tissue using 220442(CD47 Antibody) at a dilution of 1/50(Cytoplasm).



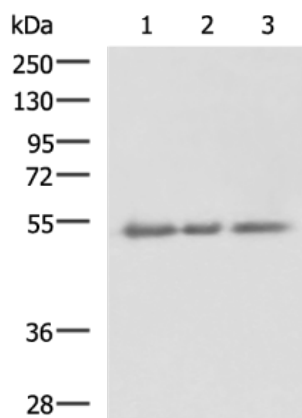
In comparison with the IHC on the left, the same paraffin-embedded Human brain tissue is first treated with the synthetic peptide and then with 220442(Anti-CD47 Antibody) at dilution 1/50.



The image on the left is immunohistochemistry of paraffin-embedded Human Lymphoma tissue using 220442(Anti-CD47 Antibody) at a dilution of 1/50.



In comparison with the IHC on the left, the same paraffin-embedded Human Lymphoma tissue is first treated with synthetic peptide and then with D261534(Anti-CD47 Antibody) at dilution 1/50.



Gel: 8%SDS-PAGE, Lysate: 40 µg;
 Lane 1-3: Human metastatic poorly differentiated adenocarcinoma of the ovary tissue, Human ovarian cancer tissue lysate, Human ovarian cancer (granulosa cell tumor) tissue lysates;
 Primary antibody: 220442(CD47 Antibody) at dilution 1/600;
 Secondary antibody: HRP-conjugated Goat anti rabbit IgG at 1/5000 dilution;
 Exposure time: 3 minutes



Product Description

Pioneering GTPase and Oncogene Product Development since 2010
