

CD32 RABBIT MAB

Cat.#: N261996

Product Name: Anti-CD32 Rabbit Monoclonal Antibody

Synonyms: FCGR2A; CD32; FCG2; FCGR2A1; IGFR2; Low affinity immunoglobulin gamma Fc region receptor II- α ; IgG Fc receptor II- α ; CDw32; Fc-gamma RII- α ; Fc-gamma-RII α ; FcRII- α ; CD32

UNIPROT ID: P12318

Background: Binds to the Fc region of immunoglobulins gamma. Low affinity receptor. By binding to IgG it initiates cellular responses against pathogens and soluble antigens.

Immunogen: A synthetic peptide of human CD32

Applications: WB,IHC-P

Recommended Dilutions: WB: 1/500-1/1000 IHC: 1/50-1/100

Host Species: Rabbit

Clonality: Rabbit Monoclonal

Clone ID: R09-5D1

MW: Calculated MW: 35 kDa; Observed MW: 35-42 kDa

Isotype: IgG

Purification: Affinity Purified

Species Reactivity: Human

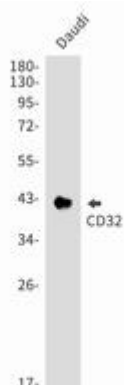
Conjugation: Unconjugated

Modification: Unmodified

Constituents: PBS (without Mg²⁺ and Ca²⁺), pH 7.3 containing 50% glycerol, 0.5% BSA and 0.02% sodium azide

Research Areas: Tags & Cell Markers

Storage & Shipping: Store at -20°C. Avoid repeated freezing and thawing



Western blot analysis of CD32 in Daudi lysates using CD32 antibody.



Product Description

Pioneering GTPase and Oncogene Product Development since 2010
