

CD300D RABBIT PAB

Cat.#: N225124

Product Name: Anti-CD300d Rabbit pAb

Synonyms: CD300LD; CD300D; CMRF35A4; CMRF35-like molecule 4; CLM-4; CD300 antigen-like family member D; CMRF35-A4; CD300d

UNIPROT ID: Q6UXZ3

Background: Predicted to enable transmembrane signaling receptor activity and virus receptor activity. Predicted to be involved in immune system process. Predicted to act upstream of or within regulation of interleukin-6 production and regulation of tumor necrosis factor production. Predicted to be integral component of membrane. Predicted to be active in plasma membrane.

Immunogen: The antiserum was produced against synthesized peptide derived from the Internal region of human CD300LD. AA range:61-110

Applications: WB,ELISA

Recommended Dilutions: WB: 1/500-1/1000 ELISA: 1/10000

Host Species: Rabbit

Clonality: Rabbit Polyclonal

Clone ID: -

MW: Calculated MW: 22 kDa; Observed MW: 22 kDa

Isotype: IgG

Purification: Affinity Purified

Species Reactivity: Human

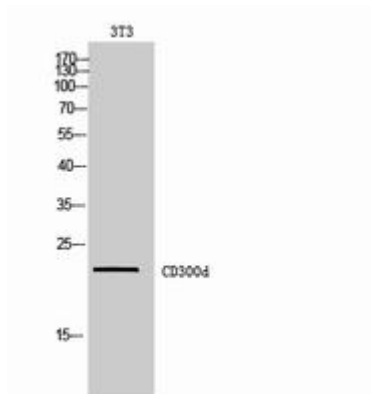
Conjugation: Unconjugated

Modification: Unmodified

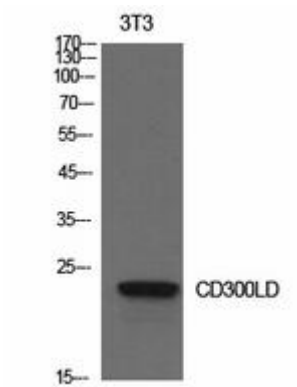
Constituents: PBS (without Mg²⁺ and Ca²⁺), pH 7.3 containing 50% glycerol, 0.5% BSA and 0.02% sodium azide

Research Areas: Immunology

Storage & Shipping: Store at -20°C. Avoid repeated freezing and thawing



Western blot analysis of CD300d in 3T3 lysates using CD300d antibody.



Western blot analysis of CD300d in NIH3T3 lysates using CD300d antibody.