

## CD272 RABBIT MAB

**Cat.#:** N261990

**Product Name:** Anti-CD272 Rabbit Monoclonal Antibody

**Synonyms:** A630002H24; B- and T-lymphocyte-associated protein

**UNIPROT ID:** Q7TSA3

**Background:** Lymphocyte inhibitory receptor which inhibits lymphocytes during immune response.

**Immunogen:** Recombinant protein of mouse CD272

**Applications:** WB,IHC-P,IP

**Recommended Dilutions:** WB: 1/500-1/1000 IHC: 1/50-1/100 IP: 1/20

**Host Species:** Rabbit

**Clonality:** Rabbit Monoclonal

**Clone ID:** R09-4A1

**MW:** Calculated MW: 34 kDa; Observed MW: 55-80 kDa

**Isotype:** IgG

**Purification:** Affinity Purified

**Species Reactivity:** Human,Mouse

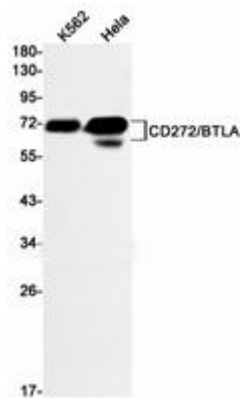
**Conjugation:** Unconjugated

**Modification:** Unmodified

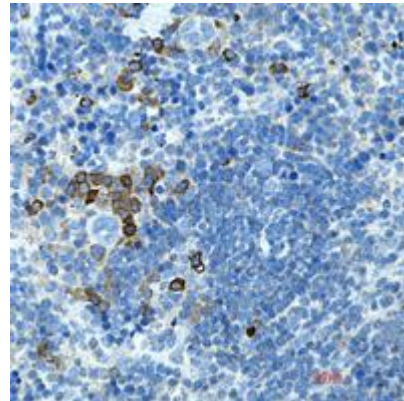
**Constituents:** PBS (without Mg<sup>2+</sup> and Ca<sup>2+</sup>), pH 7.3 containing 50% glycerol, 0.5% BSA and 0.02% sodium azide

**Research Areas:** Immunology

**Storage & Shipping:** Store at -20°C. Avoid repeated freezing and thawing



Western blot analysis of CD272/BTLA in K562, HeLa lysates using CD272/BTLA antibody



Immunohistochemistry analysis of paraffin-embedded mouse spleen using CD272 antibody. High-pressure and temperature Sodium Citrate pH 6.0 was used for antigen retrieval.



Western blot analysis of CD272/BTLA in 3T3 lysates using CD272/BTLA antibody.