

## CD247 RABBIT PAB

**Cat.#:** S218446

**Product Name:** Anti-CD247 Rabbit Polyclonal Antibody

**Synonyms:** T3Z; CD3H; CD3Q; CD3Z; TCRZ; IMD25; CD3-ZETA

**UNIPROT ID:** P20963 (Gene Accession - BC025703 )

**Background:** The protein encoded by this gene is T-cell receptor zeta, which together with T-cell receptor alpha/beta and gamma/delta heterodimers, and with CD3-gamma, -delta and -epsilon, forms the T-cell receptor-CD3 complex. The zeta chain plays an important role in coupling antigen recognition to several intracellular signal-transduction pathways. Low expression of the antigen results in impaired immune response. Two alternatively spliced transcript variants encoding distinct isoforms have been found for this gene.

**Immunogen:** Fusion protein of human CD247

**Applications:** ELISA, WB, IHC

**Recommended Dilutions:** IHC: 25-100;WB: 500-2000;ELISA: 5000-10000

**Host Species:** Rabbit

**Clonality:** Rabbit Polyclonal

**Isotype:** Immunogen-specific rabbit IgG

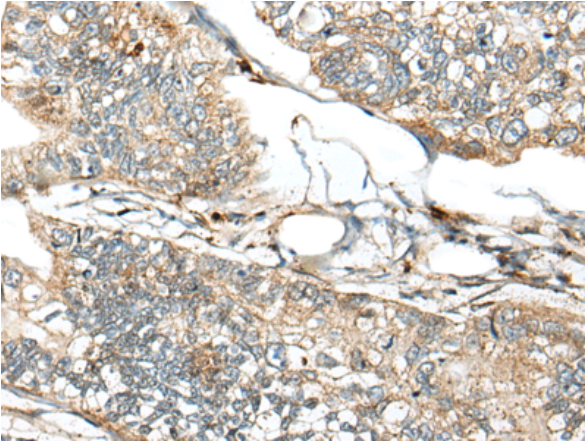
**Purification:** Antigen affinity purification

**Species Reactivity:** Human, Mouse

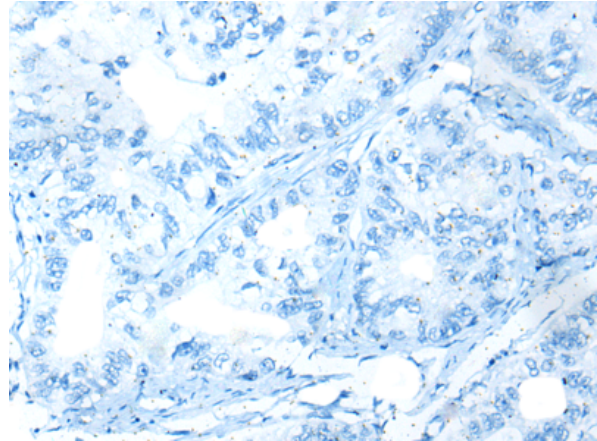
**Constituents:** PBS (without Mg<sup>2+</sup> and Ca<sup>2+</sup>), pH 7.4, 150 mM NaCl, 0.05% Sodium Azide and 40% glycerol

**Research Areas:** Immunology, Stem Cells

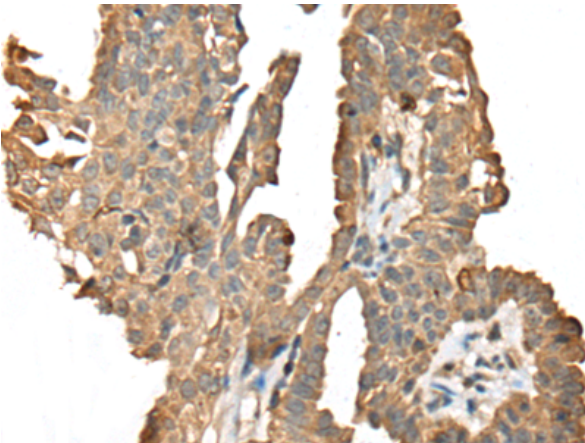
**Storage & Shipping:** Store at -20°C. Avoid repeated freezing and thawing



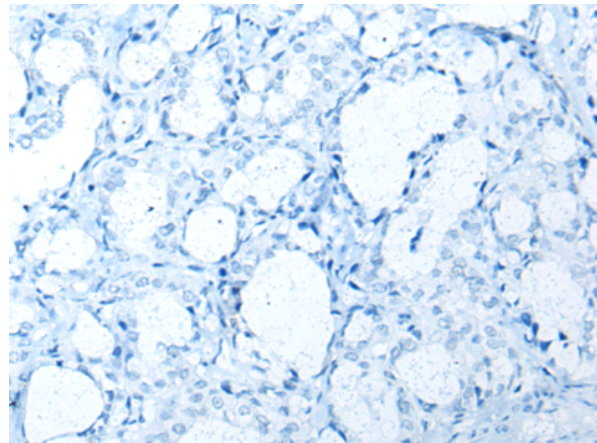
Immunohistochemistry analysis of paraffin embedded Human gastric cancer tissue using 218446(CD247 Antibody) at a dilution of 1/30(Cell membrane).



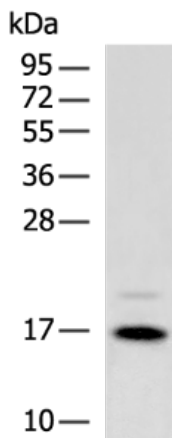
In comparison with the IHC on the left, the same paraffin-embedded Human gastric cancer tissue is first treated with the fusion protein and then with 218446(Anti-CD247 Antibody) at dilution 1/30.



The image on the left is immunohistochemistry of paraffin-embedded Human thyroid cancer tissue using 218446(Anti-CD247 Antibody) at a dilution of 1/30.



In comparison with the IHC on the left, the same paraffin-embedded Human thyroid cancer tissue is first treated with fusion protein and then with D224458(Anti-CD247 Antibody) at dilution 1/30.



Gel: 12%SDS-PAGE, Lysate: 40 µg;  
 Lane: Jurkat cell lysate;  
 Primary antibody: 218446(CD247 Antibody) at dilution 1/200;  
 Secondary antibody: Goat anti rabbit IgG at 1/8000 dilution;  
 Exposure time: 20 seconds



# Product Description

Pioneering GTPase and Oncogene Product Development since 2010

---