

CD226 RABBIT MAB

Cat.#: N261988

Product Name: Anti-CD226 Rabbit Monoclonal Antibody

Synonyms: Platelet and T-cell activation antigen 1; CD226

UNIPROT ID: Q8K4F0

Background: Involved in intercellular adhesion, lymphocyte signaling, cytotoxicity and lymphokine secretion mediated by cytotoxic T-lymphocyte (CTL) and NK cell. Cell surface receptor for NECTIN2. Upon ligand binding, stimulates T-cell proliferation and cytokine production, including that of IL2, IL5, IL10, IL13, and IFNG. Competes with PVRIG for NECTIN2-binding.

Immunogen: Recombinant protein of mouse CD226

Applications: WB,IHC-F,IHC-P,ICC/IF,IP

Recommended Dilutions: WB: 1/500-1/1000 IHC: 1/50-1/100 IF: 1/50-1/200 IP: 1/20

Host Species: Rabbit

Clonality: Rabbit Monoclonal

Clone ID: R01-4C1

MW: Calculated MW: 38 kDa; Observed MW: 55-65 kDa

Isotype: IgG

Purification: Affinity Purified

Species Reactivity: Mouse

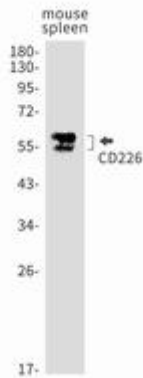
Conjugation: Unconjugated

Modification: Unmodified

Constituents: PBS (without Mg²⁺ and Ca²⁺), pH 7.3 containing 50% glycerol, 0.5% BSA and 0.02% sodium azide

Research Areas: Immunology

Storage & Shipping: Store at -20°C. Avoid repeated freezing and thawing



Western blot analysis of CD226 in mouse spleen lysates using CD226 antibody.