

## CD207 RABBIT PAB

**Cat.#:** S216610

**Product Name:** Anti-CD207 Rabbit Polyclonal Antibody

**Synonyms:** CLEC4K

**UNIPROT ID:** Q9UJ71 (Gene Accession - BC022278 )

**Background:** The protein encoded by this gene is expressed only in Langerhans cells which are immature dendritic cells of the epidermis and mucosa. It is localized in the Birbeck granules, organelles present in the cytoplasm of Langerhans cells and consisting of superimposed and zippered membranes. It is a C-type lectin with mannose binding specificity, and it has been proposed that mannose binding by this protein leads to internalization of antigen into Birbeck granules and providing access to a nonclassical antigen-processing pathway. Mutations in this gene result in Birbeck granules deficiency or loss of sugar binding activity.

**Immunogen:** Fusion protein of human CD207

**Applications:** ELISA, WB, IHC

**Recommended Dilutions:** IHC: 250-500;WB: 500-2000;ELISA: 5000-10000

**Host Species:** Rabbit

**Clonality:** Rabbit Polyclonal

**Isotype:** Immunogen-specific rabbit IgG

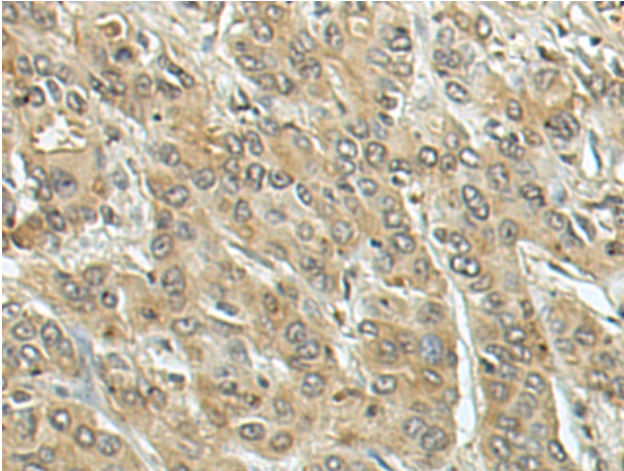
**Purification:** Antigen affinity purification

**Species Reactivity:** Human, Mouse

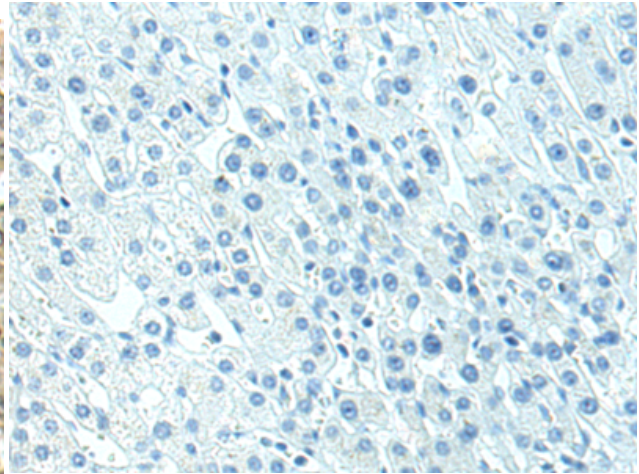
**Constituents:** PBS (without Mg<sup>2+</sup> and Ca<sup>2+</sup>), pH 7.4, 150 mM NaCl, 0.05% Sodium Azide and 40% glycerol

**Research Areas:** Metabolism

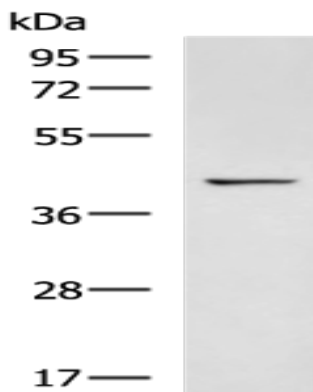
**Storage & Shipping:** Store at -20°C. Avoid repeated freezing and thawing



Immunohistochemistry analysis of paraffin embedded Human liver cancer tissue using 216610(CD207 Antibody) at a dilution of 1/240(Cytoplasm).



In comparison with the IHC on the left, the same paraffin-embedded Human liver cancer tissue is first treated with the fusion protein and then with 216610(Anti-CD207 Antibody) at dilution 1/240.



Gel: 8%SDS-PAGE, Lysate: 40  $\mu$ g;  
Lane: Mouse skin tissue lysate;  
Primary antibody: 216610(CD207 Antibody) at dilution 1/1300;  
Secondary antibody: HRP-conjugated Goat anti rabbit IgG at 1/5000 dilution;  
Exposure time: 1 minute