

CD166 RABBIT MAB

Cat.#: N261983

Product Name: Anti-CD166 Rabbit Monoclonal Antibody

Synonyms: ALCAM; MEMD; CD166 antigen; Activated leukocyte cell adhesion molecule; CD166

UNIPROT ID: Q13740

Background: Cell adhesion molecule that binds to CD6. Involved in neurite extension by neurons via heterophilic and homophilic interactions. May play a role in the binding of T- and B-cells to activated leukocytes, as well as in interactions between cells of the nervous system.

Immunogen: A synthetic peptide of human CD166

Applications: WB,IHC-F,IHC-P,ICC/IF,IP

Recommended Dilutions: WB: 1/500-1/1000 IHC: 1/50-1/100 IF: 1/50-1/200 IP: 1/20

Host Species: Rabbit

Clonality: Rabbit Monoclonal

Clone ID: R03-2E5

MW: Calculated MW: 65 kDa; Observed MW: 105 kDa

Isotype: IgG

Purification: Affinity Purified

Species Reactivity: Human,Mouse,Rat

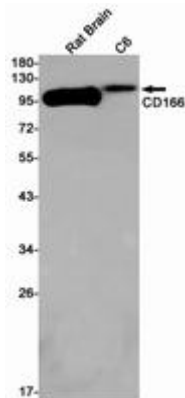
Conjugation: Unconjugated

Modification: Unmodified

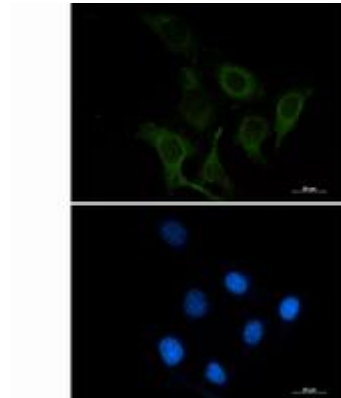
Constituents: PBS (without Mg²⁺ and Ca²⁺), pH 7.3 containing 50% glycerol, 0.5% BSA and 0.02% sodium azide

Research Areas: Immunology

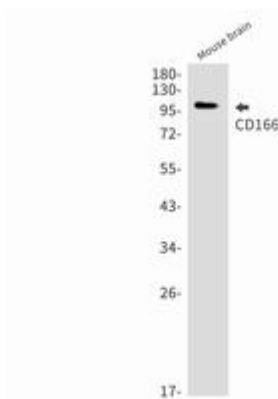
Storage & Shipping: Store at -20°C. Avoid repeated freezing and thawing



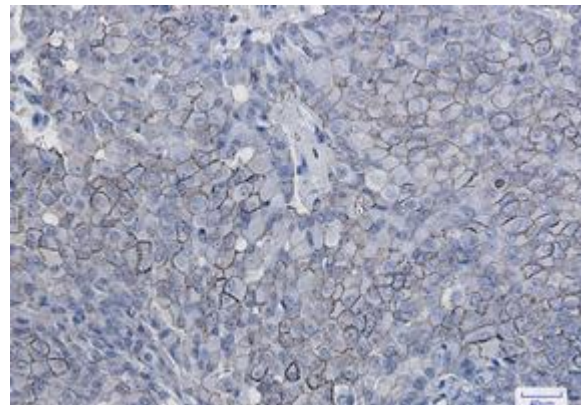
Western blot analysis of CD166 in rat Brain, C6 lysates using CD166 antibody



Immunocytochemistry analysis of CD166 (green) in SKOV-3 using CD166 antibody, and DAPI (blue).



Western blot analysis of CD166 in mouse brain lysates using CD166 antibody.



Immunohistochemistry analysis of paraffin-embedded Human breast cancer using CD166 antibody. High-pressure and temperature Sodium Citrate pH 6.0 was used for antigen retrieval.