

CD16 RABBIT PAB

Cat.#: N225082

Product Name: Anti-CD16 Rabbit pAb

Synonyms: CD16A; FCG3; FCGR3; IGFR3; CD16B; FCG3; FCGR3; IGFR3

UNIPROT ID: P08637/O75015

Background: Receptor for the Fc region of IgG. Binds complexed or aggregated IgG and also monomeric IgG. Mediates antibody-dependent cellular cytotoxicity (ADCC) and other antibody-dependent responses, such as phagocytosis.

Immunogen: Synthetic peptide from human protein at AA range: 100-150

Applications: IHC-P,ELISA

Recommended Dilutions: IHC: 1/50-1/100 ELISA: 1/10000

Host Species: Rabbit

Clonality: Rabbit Polyclonal

Clone ID: -

MW: -

Isotype: IgG

Purification: Affinity Purified

Species Reactivity: Human

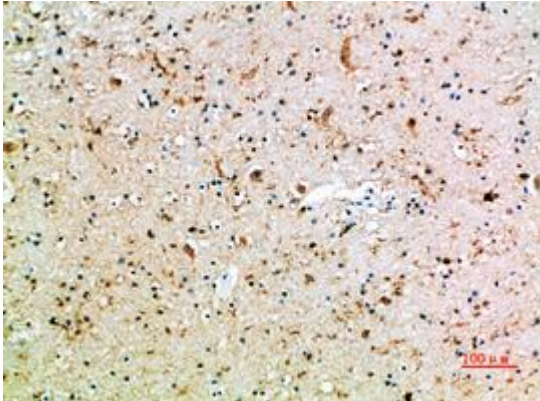
Conjugation: Unconjugated

Modification: Unmodified

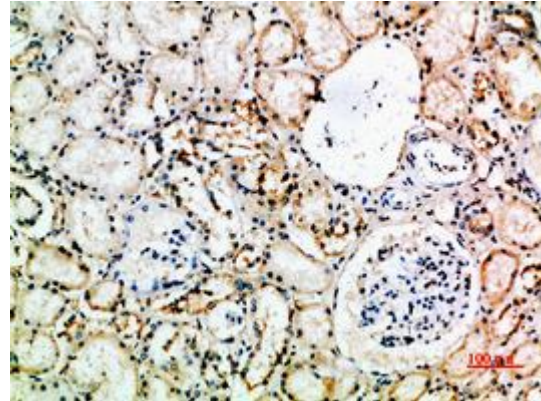
Constituents: PBS (without Mg²⁺ and Ca²⁺), pH 7.3 containing 50% glycerol, 0.5% BSA and 0.02% sodium azide

Research Areas: Immunology

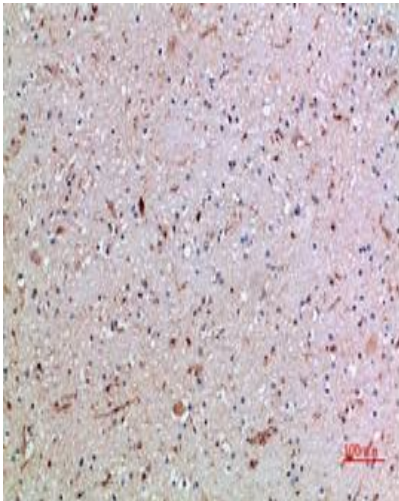
Storage & Shipping: Store at -20°C. Avoid repeated freezing and thawing



Immunohistochemical analysis of paraffin-embedded Human tonsils using CD16 antibody. High-pressure and temperature Sodium Citrate pH 6.0 was used for antigen retrieval.



Immunohistochemistry analysis of paraffin-embedded Human kidney using CD16 antibody. High-pressure and temperature Sodium Citrate pH 6.0 was used for antigen retrieval.



Immunohistochemistry analysis of paraffin-embedded Human brain using CD16 antibody. High-pressure and temperature Sodium Citrate pH 6.0 was used for antigen retrieval.