

## CD16 (9G6) MOUSE MAB

**Cat.#:** N261233

**Product Name:** Anti-CD16 (9G6) Mouse Monoclonal Antibody

**Synonyms:** IGFR3; CD16; CD16a; IMD20

**UNIPROT ID:** P08637

**Background:** Receptor for the Fc region of IgG. Binds complexed or aggregated IgG and also monomeric IgG. Mediates antibody-dependent cellular cytotoxicity (ADCC) and other antibody-dependent responses, such as phagocytosis.

**Immunogen:** Synthetic Peptide of CD16

**Applications:** WB,IHC-P

**Recommended Dilutions:** WB: 1/500-1/1000 IHC: 1/50-1/100

**Host Species:** Mouse

**Clonality:** Mouse Monoclonal

**Clone ID:** 9G6-6D7-1H3

**MW:** Calculated MW: 29 kDa; Observed MW: 45 kDa

**Isotype:** IgG1

**Purification:** Affinity Purified

**Species Reactivity:** Human

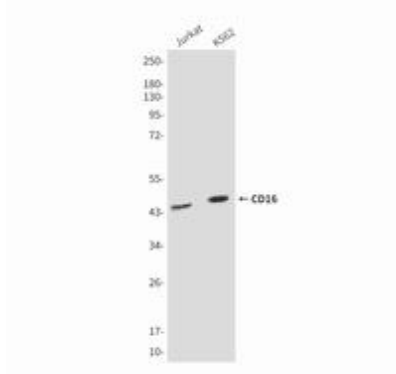
**Conjugation:** Unconjugated

**Modification:** Unmodified

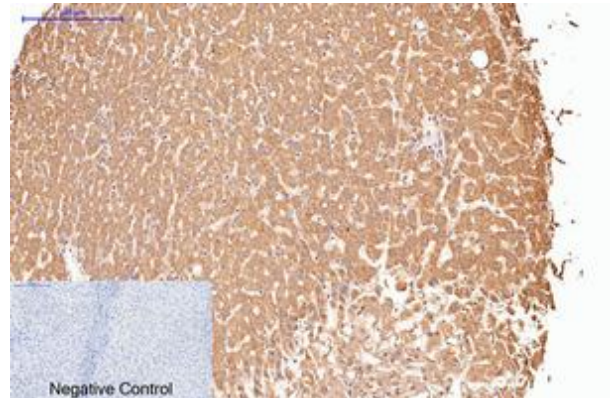
**Constituents:** PBS (without Mg<sup>2+</sup> and Ca<sup>2+</sup>), pH 7.3 containing 50% glycerol, 0.5% BSA and 0.02% sodium azide

**Research Areas:** Immunology

**Storage & Shipping:** Store at -20°C. Avoid repeated freezing and thawing



Western blot analysis of CD16 (9G6) in Jurkat, K562 lysates using CD16 (9G6) antibody



Immunohistochemistry analysis of paraffin-embedded Human liver tissue using CD16 (9G6) antibody. High-pressure and temperature Sodium Citrate pH 6.0 was used for antigen retrieval. Negative control was used by secondary antibody only.