

## CD155 RABBIT PAB

**Cat.#:** N225123

**Product Name:** Anti-CD155 Rabbit pAb

**Synonyms:** PVR; PVS; Poliovirus receptor; Nectin-like protein 5; NECL-5; CD155

**UNIPROT ID:** P15151

**Background:** Mediates NK cell adhesion and triggers NK cell effector functions. Binds two different NK cell receptors: CD96 and CD226. These interactions accumulates at the cell-cell contact site, leading to the formation of a mature immunological synapse between NK cell and target cell.

**Immunogen:** The antiserum was produced against synthesized peptide derived from the Internal region of human PVR. AA range:81-130

**Applications:** WB,ELISA

**Recommended Dilutions:** WB: 1/500-1/1000 ELISA: 1/10000

**Host Species:** Rabbit

**Clonality:** Rabbit Polyclonal

**Clone ID:** -

**MW:** Calculated MW: 45 kDa; Observed MW: 45 kDa

**Isotype:** IgG

**Purification:** Affinity Purified

**Species Reactivity:** Human,Mouse,Rat

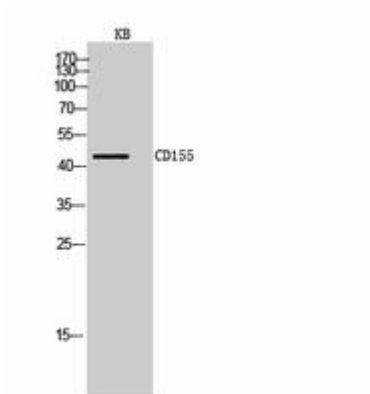
**Conjugation:** Unconjugated

**Modification:** Unmodified

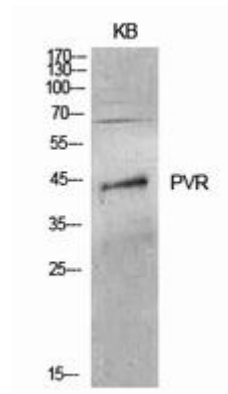
**Constituents:** PBS (without Mg<sup>2+</sup> and Ca<sup>2+</sup>), pH 7.3 containing 50% glycerol, 0.5% BSA and 0.02% sodium azide

**Research Areas:** Immunology

**Storage & Shipping:** Store at -20°C. Avoid repeated freezing and thawing



Western blot analysis of CD155 in KB lysates using CD155 antibody.



Western blot analysis of CD155 in KB lysates using CD155 antibody.