

## CD147 RABBIT PAB

**Cat.#:** N225996

**Product Name:** Anti-CD147 Rabbit pAb

**Synonyms:** HT-7; CD147; EMMPRIN; AII15436; AI325119

**UNIPROT ID:** P18572

**Background:** Essential for normal retinal maturation and development. Acts as a retinal cell surface receptor for NXNL1 and plays an important role in NXNL1-mediated survival of retinal cone photoreceptors. In association with glucose transporter SLC16A1/GLUT1 and NXNL1, promotes retinal cone survival by enhancing aerobic glycolysis and accelerating the entry of glucose into photoreceptors.

**Immunogen:** Recombinant protein of mouse CD147

**Applications:** WB,IHC-P,FC,IP

**Recommended Dilutions:** WB: 1/500-1/1000 IHC: 1/50-1/100 IP: 1/20 FC: 1/50-1/100

**Host Species:** Rabbit

**Clonality:** Rabbit Polyclonal

**Clone ID:** -

**MW:** Calculated MW: 42 kDa; Observed MW: 38-58 kDa

**Isotype:** IgG

**Purification:** Affinity Purified

**Species Reactivity:** Human,Mouse

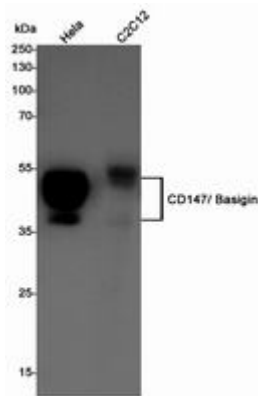
**Conjugation:** Unconjugated

**Modification:** Unmodified

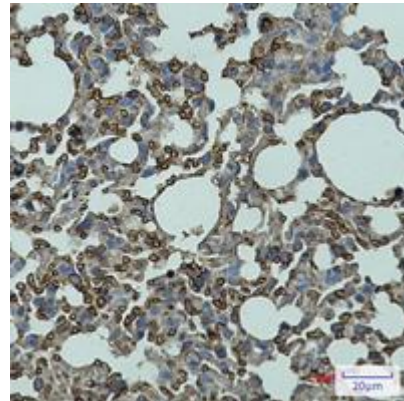
**Constituents:** PBS (without Mg<sup>2+</sup> and Ca<sup>2+</sup>), pH 7.3 containing 50% glycerol, 0.5% BSA and 0.02% sodium azide

**Research Areas:** Immunology

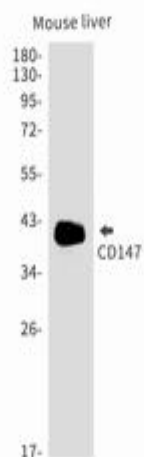
**Storage & Shipping:** Store at -20°C. Avoid repeated freezing and thawing



Western blot analysis of CD147/ Basigin in HeLa, C2C12 lysates using CD147/ Basigin antibody



Immunohistochemistry analysis of paraffin-embedded mouse lung using CD147 antibody. High-pressure and temperature Sodium Citrate pH 6.0 was used for antigen retrieval.



Western blot analysis of CD147 in mouse liver lysates using CD147 antibody.