

## CD147 RABBIT MAB

**Cat.#:** N261982

**Product Name:** Anti-CD147 Rabbit Monoclonal Antibody

**Synonyms:** HT-7; CD147; EMMPRIN; AII15436; AI325119

**UNIPROT ID:** P18572

**Background:** Plays an important role in targeting the monocarboxylate transporters SLC16A1, SLC16A3, SLC16A8, SLC16A11 and SLC16A12 to the plasma membrane. Plays pivotal roles in spermatogenesis, embryo implantation, neural network formation and tumor progression. Stimulates adjacent fibroblasts to produce matrix metalloproteinases (MMPS). Seems to be a receptor for oligomannosidic glycans. In vitro, promotes outgrowth of astrocytic processes.

**Immunogen:** Recombinant protein of mouse CD147

**Applications:** WB, ICC/IF, IP

**Recommended Dilutions:** WB: 1/500-1/1000 IF: 1/50-1/200 IP: 1/20

**Host Species:** Rabbit

**Clonality:** Rabbit Monoclonal

**Clone ID:** R03-7C3

**MW:** Calculated MW: 42 kDa; Observed MW: 38-58 kDa

**Isotype:** IgG

**Purification:** Affinity Purified

**Species Reactivity:** Mouse, Rat

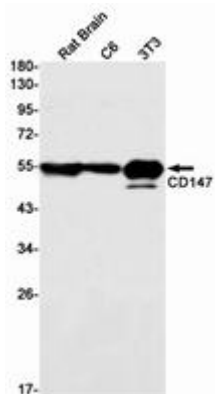
**Conjugation:** Unconjugated

**Modification:** Unmodified

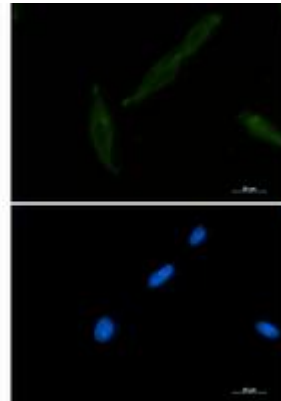
**Constituents:** PBS (without Mg<sup>2+</sup> and Ca<sup>2+</sup>), pH 7.3 containing 50% glycerol, 0.5% BSA and 0.02% sodium azide

**Research Areas:** Immunology

**Storage & Shipping:** Store at -20°C. Avoid repeated freezing and thawing



Western blot analysis of CD147 in rat Brain, C6, 3T3 lysates using CD147 antibody.



Immunocytochemistry analysis of CD147 (green) in 3T3 using CD147 antibody, and DAPI (blue).