

## CD130 RABBIT PAB

**Cat.#:** N226078

**Product Name:** Anti-CD130 Rabbit pAb

**Synonyms:** Interleukin-6 receptor subunit beta ,IL-6 receptor subunit beta,IL-6R subunit beta,IL-6R-beta, IL-6RB,CDw130

**UNIPROT ID:** P40189

**Background:** The receptor systems for IL6, LIF, OSM, CNTF, IL11, CTF1 and BSF3 can utilize IL6ST for initiating signal transmission. Binding of IL6 to IL6R induces IL6ST homodimerization and formation of a high-affinity receptor complex, which activates the intracellular JAK-MAPK and JAK-STAT3 signaling pathways.

**Immunogen:** A synthesized peptide derived from human CD130/gp130

**Applications:** WB,IHC-P

**Recommended Dilutions:** WB: 1/500-1/1000 IHC: 1/50-1/100

**Host Species:** Rabbit

**Clonality:** Rabbit Polyclonal

**Clone ID:** [Clone ID]

**MW:** Calculated MW: 104 kDa; Observed MW: 130-140kDa

**Isotype:** IgG

**Purification:** Affinity Purified

**Species Reactivity:** Human,Mouse

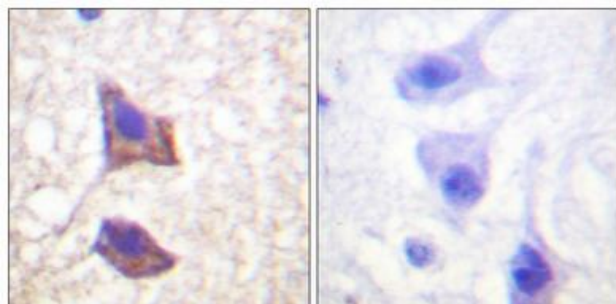
**Conjugation:** Unconjugated

**Modification:** Unmodified

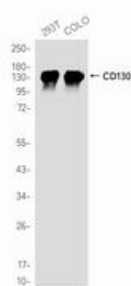
**Constituents:** PBS (without Mg<sup>2+</sup> and Ca<sup>2+</sup>), pH 7.3 containing 50% glycerol, 0.5% BSA and 0.02% sodium azide

**Research Areas:** Cell Biology

**Storage & Shipping:** Store at -20°C. Avoid repeated freezing and thawing



Immunohistochemistry analysis of paraffin-embedded human brain using CD130 antibody. High-pressure and temperature Sodium Citrate pH 6.0 was used for antigen retrieval. Sample with blocking peptide on the right.



Western blot analysis of CD130 in 293T, COLO lysates using CD130 antibody.