

## CCT6B RABBIT PAB

**Cat.#:** S218444

**Product Name:** Anti-CCT6B Rabbit Polyclonal Antibody

**Synonyms:** Cctz2; CCTZ-2; TSA303; CCT-zeta-2; TCP-1-zeta-2

**UNIPROT ID:** Q92526 (Gene Accession - BC026125 )

**Background:** This gene encodes a molecular chaperone that is a member of the chaperonin-containing TCPI complex (CCT), also known as the TCPI ring complex (TRiC). This complex consists of two identical stacked rings, each containing eight different proteins. Unfolded polypeptides enter the central cavity of the complex and are folded in an ATP-dependent manner. The complex folds various proteins, including actin and tubulin. Alternative splicing results in multiple transcript variants.

**Immunogen:** Fusion protein of human CCT6B

**Applications:** ELISA, WB, IHC

**Recommended Dilutions:** IHC: 100-300;WB: 500-2000;ELISA: 5000-10000

**Host Species:** Rabbit

**Clonality:** Rabbit Polyclonal

**Isotype:** Immunogen-specific rabbit IgG

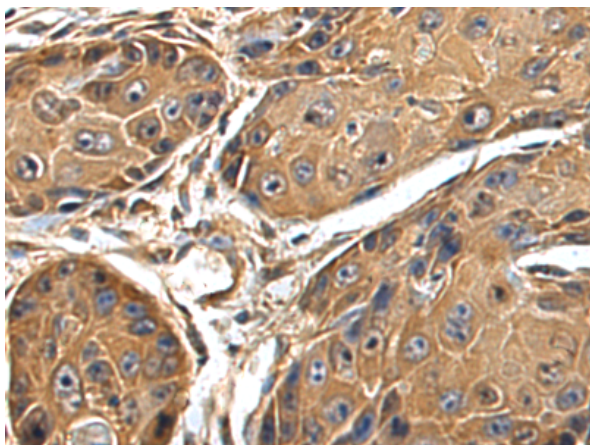
**Purification:** Antigen affinity purification

**Species Reactivity:** Human, Mouse

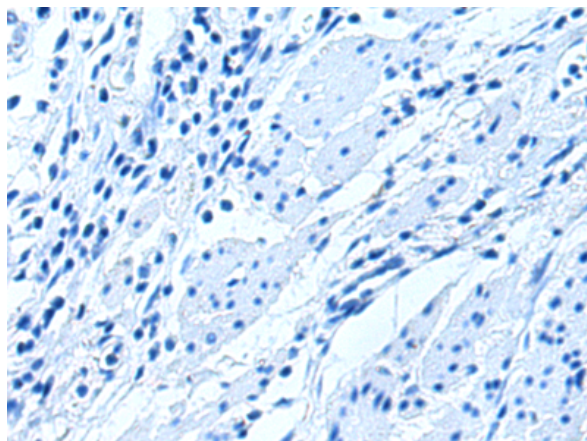
**Constituents:** PBS (without Mg<sup>2+</sup> and Ca<sup>2+</sup>), pH 7.4, 150 mM NaCl, 0.05% Sodium Azide and 40% glycerol

**Research Areas:** Signal Transduction

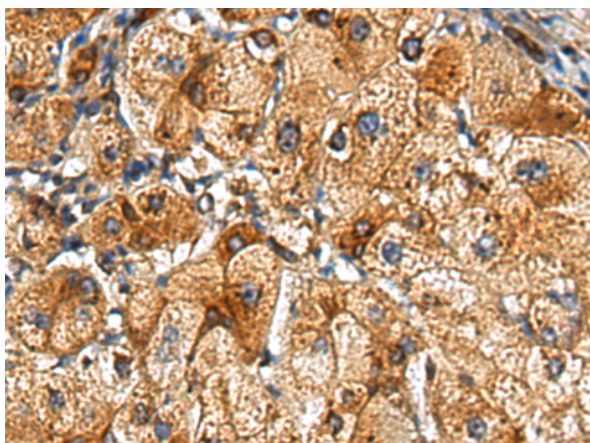
**Storage & Shipping:** Store at -20°C. Avoid repeated freezing and thawing



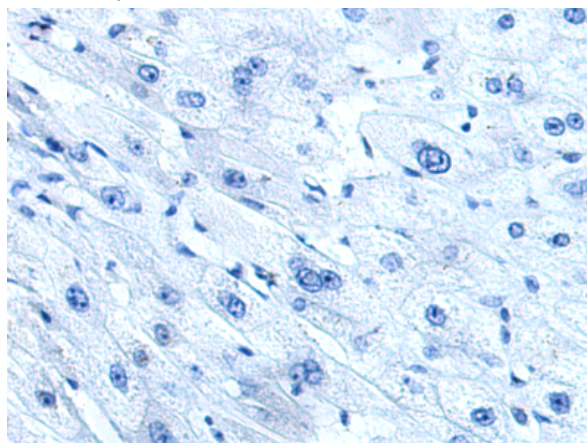
Immunohistochemistry analysis of paraffin embedded Human esophagus cancer tissue using 218444(CCT6B Antibody) at a dilution of 1/100(Cytoplasm).



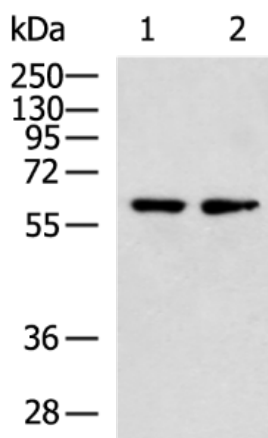
In comparison with the IHC on the left, the same paraffin-embedded Human esophagus cancer tissue is first treated with the fusion protein and then with 218444(Anti-CCT6B Antibody) at dilution 1/100.



The image on the left is immunohistochemistry of paraffin-embedded Human liver cancer tissue using 218444(Anti-CCT6B Antibody) at a dilution of 1/100.



In comparison with the IHC on the left, the same paraffin-embedded Human liver cancer tissue is first treated with fusion protein and then with D224450(Anti-CCT6B Antibody) at dilution 1/100.



Gel: 8%SDS-PAGE, Lysate: 40 µg;  
 Lane 1-2: K562 and 293T cell lysates;  
 Primary antibody: 218444(CCT6B Antibody) at dilution 1/700;  
 Secondary antibody: HRP-conjugated Goat anti rabbit IgG at 1/5000 dilution;  
 Exposure time: 10 seconds



# Product Description

Pioneering GTPase and Oncogene Product Development since 2010

---