

CCT2 RABBIT MAB

Cat.#: N263255

Product Name: Anti-CCT2 Rabbit Monoclonal Antibody

Synonyms: CCT2; 99D8.1; CCTB; T-complex protein 1 subunit beta; TCP-1-beta; CCT-beta

UNIPROT ID: P78371

Background: Molecular chaperone; assists the folding of proteins upon ATP hydrolysis. As part of the BBS/CCT complex may play a role in the assembly of BBSome, a complex involved in ciliogenesis regulating transports vesicles to the cilia. Known to play a role, in vitro, in the folding of actin and tubulin.

Immunogen: A synthetic peptide of human CCT2

Applications: WB,IHC-F,IHC-P,ICC/IF,IP

Recommended Dilutions: WB: 1/500-1/1000 IHC: 1/50-1/100 IF: 1/50-1/200 IP: 1/20

Host Species: Rabbit

Clonality: Rabbit Monoclonal

Clone ID: R07-6C2

MW: Calculated MW: 57 kDa; Observed MW: 57 kDa

Isotype: IgG

Purification: Affinity Purified

Species Reactivity: Human,Mouse,Rat

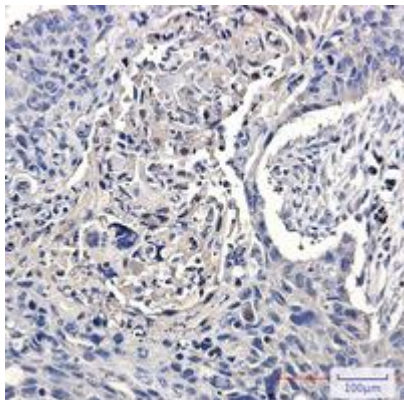
Conjugation: Unconjugated

Modification: Unmodified

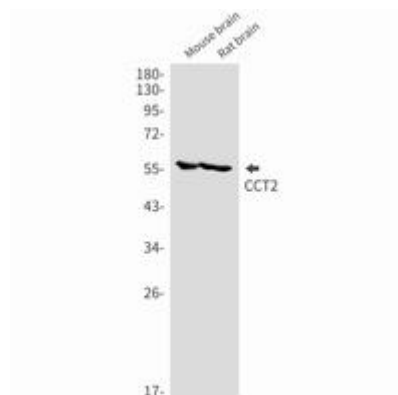
Constituents: PBS (without Mg²⁺ and Ca²⁺), pH 7.3 containing 50% glycerol, 0.5% BSA and 0.02% sodium azide

Research Areas: Signal Transduction

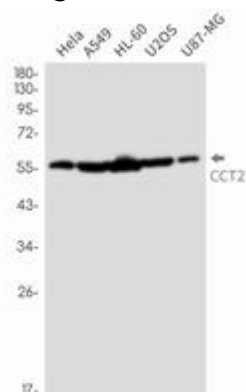
Storage & Shipping: Store at -20°C. Avoid repeated freezing and thawing



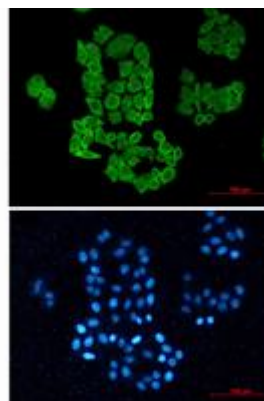
Immunohistochemistry analysis of paraffin-embedded Human lung cancer using CCT2 antibody. High-pressure and temperature Sodium Citrate pH 6.0 was used for antigen retrieval.



Western blot analysis of CCT2 in mouse brain, rat brain lysates using CCT2 antibody.



Western blot analysis of CCT2 in HeLa, A549, HL-60, U2OS, U87-MG lysates using CCT2 antibody.



Immunocytochemistry analysis of CCT2 (green) in HeLa using CCT2 antibody, and DAPI (blue).