

## CCR8 RABBIT PAB

**Cat.#:** N226017

**Product Name:** Anti-CCR8 Rabbit pAb

**Synonyms:** CKRL1; CMKBR8; CMKBRL2

**UNIPROT ID:** P51685

**Background:** Receptor for the chemokine CCL1/SCYA1/I-309. May regulate monocyte chemotaxis and thymic cell line apoptosis. Alternative coreceptor with CD4 for HIV-1 infection.

**Immunogen:** A synthetic peptide of human CCR8

**Applications:** WB, ICC/IF, FC

**Recommended Dilutions:** WB: 1/500-1/1000 IF: 1/50-1/200 FC: 1/50-1/100

**Host Species:** Rabbit

**Clonality:** Rabbit Polyclonal

**Clone ID:** -

**MW:** Calculated MW: 41 kDa; Observed MW: 41 kDa

**Isotype:** IgG

**Purification:** Affinity Purified

**Species Reactivity:** Rat

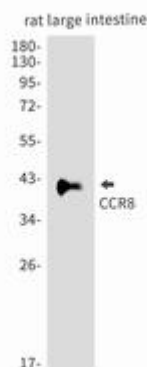
**Conjugation:** Unconjugated

**Modification:** Unmodified

**Constituents:** PBS (without Mg<sup>2+</sup> and Ca<sup>2+</sup>), pH 7.3 containing 50% glycerol, 0.5% BSA and 0.02% sodium azide

**Research Areas:** Immunology

**Storage & Shipping:** Store at -20°C. Avoid repeated freezing and thawing



Western blot analysis of CCR8 in rat large intestine lysates using CCR8 antibody.



# Product Description

Pioneering GTPase and Oncogene Product Development since 2010

---