

CCNJ RABBIT PAB

Cat.#: S216459

Product Name: Anti-CCNJ Rabbit Polyclonal Antibody

Synonyms: bA690P14.1

UNIPROT ID: Q5T5M9 (Gene Accession - BC043175)

Background: Predicted to enable cyclin-dependent protein serine/threonine kinase regulator activity. Predicted to be involved in mitotic cell cycle phase transition and regulation of cyclin-dependent protein serine/threonine kinase activity. Predicted to be part of cyclin-dependent protein kinase holoenzyme complex. Predicted to be active in centrosome; cytoplasm; and nucleus. [provided by Alliance of Genome Resources, Apr 2022]

Immunogen: Fusion protein of human CCNJ

Applications: ELISA, IHC

Recommended Dilutions: IHC: 100-300; ELISA: 5000-10000

Host Species: Rabbit

Clonality: Rabbit Polyclonal

Isotype: Immunogen-specific rabbit IgG

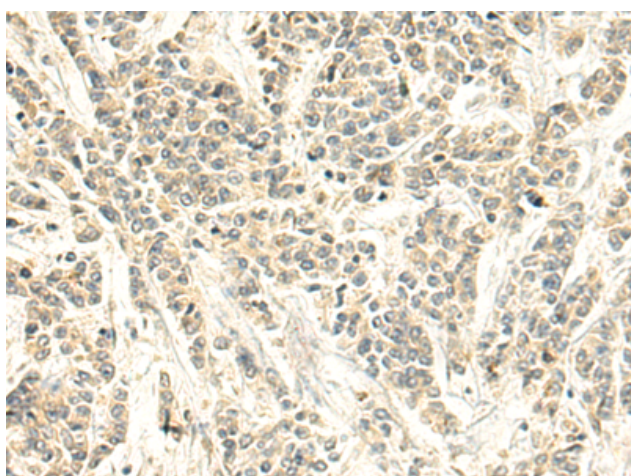
Purification: Antigen affinity purification

Species Reactivity: Human

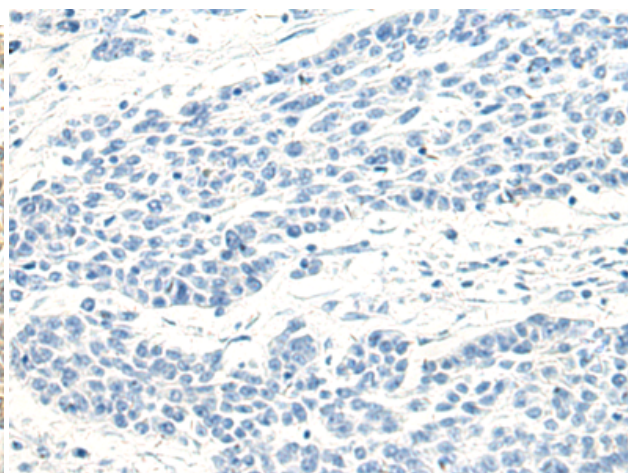
Constituents: PBS (without Mg²⁺ and Ca²⁺), pH 7.4, 150 mM NaCl, 0.05% Sodium Azide and 40% glycerol

Research Areas: Cancer

Storage & Shipping: Store at -20°C. Avoid repeated freezing and thawing



Immunohistochemistry analysis of paraffin embedded Human colorectal cancer tissue using 216459 (CCNJ Antibody) at a dilution of 1/140 (Cytoplasm).



In comparison with the IHC on the left, the same paraffin-embedded Human colorectal cancer tissue is first treated with the fusion protein and then with 216459 (Anti-CCNJ Antibody) at dilution 1/140.