

## CCN1 RABBIT PAB

**Cat.#:** S217332

**Product Name:** Anti-CCN1 Rabbit Polyclonal Antibody

**Synonyms:** GIG1; CYR61; IGFBP10

**UNIPROT ID:** O00622 (Gene Accession - BC001271 )

**Background:** The secreted protein encoded by this gene is growth factor-inducible and promotes the adhesion of endothelial cells. The encoded protein interacts with several integrins and with heparan sulfate proteoglycan. This protein also plays a role in cell proliferation, differentiation, angiogenesis, apoptosis, and extracellular matrix formation.

**Immunogen:** Fusion protein of human CCN1

**Applications:** ELISA, WB, IHC

**Recommended Dilutions:** IHC: 50-200;WB: 500-2000;ELISA: 5000-10000

**Host Species:** Rabbit

**Clonality:** Rabbit Polyclonal

**Isotype:** Immunogen-specific rabbit IgG

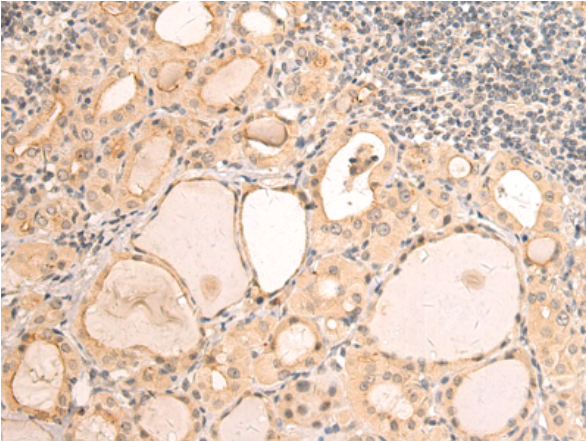
**Purification:** Antigen affinity purification

**Species Reactivity:** Human, Mouse, Rat

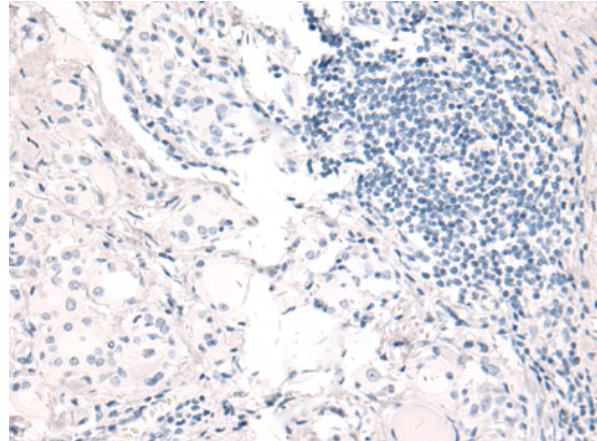
**Constituents:** PBS (without Mg<sup>2+</sup> and Ca<sup>2+</sup>), pH 7.4, 150 mM NaCl, 0.05% Sodium Azide and 40% glycerol

**Research Areas:** Signal Transduction, Cancer, Cardiovascular, Immunology, Stem Cells

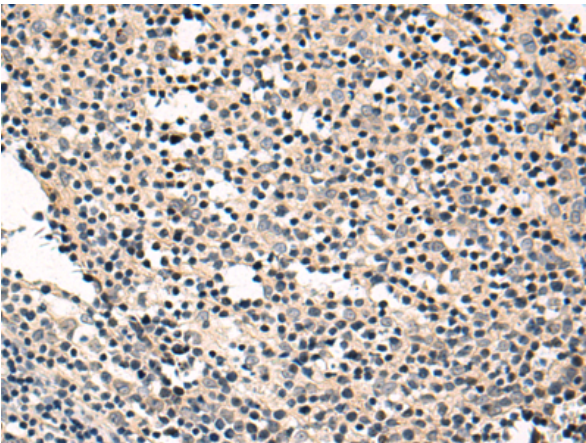
**Storage & Shipping:** Store at -20°C. Avoid repeated freezing and thawing



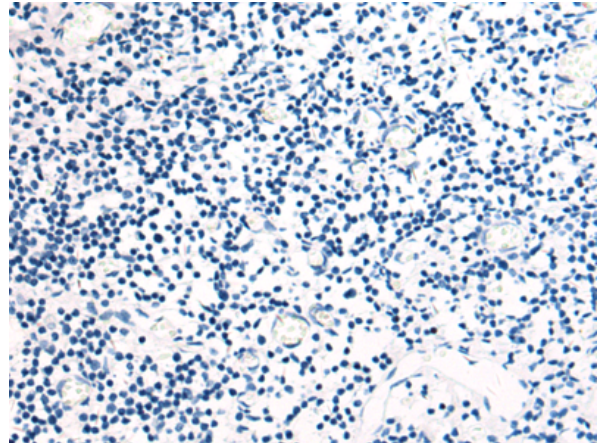
Immunohistochemistry analysis of paraffin embedded Human thyroid cancer tissue using 217332(CCNI Antibody) at a dilution of 1/100(Cytoplasm).



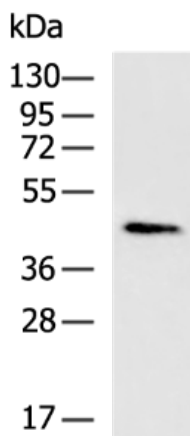
In comparison with the IHC on the left, the same paraffin-embedded Human thyroid cancer tissue is first treated with the fusion protein and then with 217332(Anti-CCNI Antibody) at dilution 1/100.



The image on the left is immunohistochemistry of paraffin-embedded Human tonsil tissue using 217332(Anti-CCNI Antibody) at a dilution of 1/100.



In comparison with the IHC on the left, the same paraffin-embedded Human tonsil tissue is first treated with fusion protein and then with D222190(Anti-CCNI Antibody) at dilution 1/100.



Gel: 8%SDS-PAGE, Lysate: 40 µg;  
Lane: HeLa cell lysate;  
Primary antibody: 217332(CCNI Antibody) at dilution 1/800;  
Secondary antibody: HRP-conjugated Goat anti rabbit IgG at 1/5000 dilution;  
Exposure time: 2 minutes



# Product Description

Pioneering GTPase and Oncogene Product Development since 2010

---