

CCL26 RABBIT PAB

Cat.#: S213416

Product Name: Anti-CCL26 Rabbit Polyclonal Antibody

Synonyms: IMAC; TSC-1; MIP-4 α ; SCYA26; MIP-4 α

UNIPROT ID: Q9Y258 (Gene Accession - NP_006063)

Background: This gene is one of two Cys-Cys (CC) cytokine genes clustered on the q arm of chromosome 7. Cytokines are a family of secreted proteins involved in immunoregulatory and inflammatory processes. The CC cytokines are proteins characterized by two adjacent cysteines. The cytokine encoded by this gene displays chemotactic activity for normal peripheral blood eosinophils and basophils. This protein also has antimicrobial activity, displaying an antibacterial effect on *S. pneumoniae*, *S. aureus*, Non-typeable *H. influenzae*, and *P. aeruginosa*. The product of this gene is one of three related chemokines that specifically activate chemokine receptor CCR3. This chemokine may contribute to the eosinophil accumulation in atopic diseases. [provided by RefSeq, Jul 2020]

Immunogen: Synthetic peptide of human CCL26

Applications: ELISA, IHC

Recommended Dilutions: IHC: 50-100; ELISA: 5000-10000

Host Species: Rabbit

Clonality: Rabbit Polyclonal

Isotype: Immunogen-specific rabbit IgG

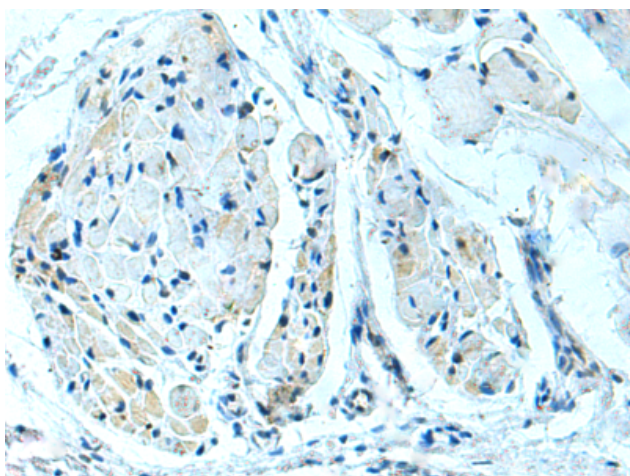
Purification: Antigen affinity purification

Species Reactivity: Human

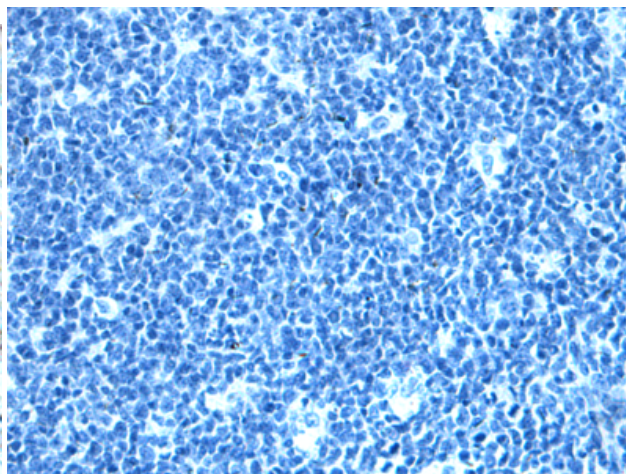
Constituents: PBS (without Mg²⁺ and Ca²⁺), pH 7.4, 150 mM NaCl, 0.05% Sodium Azide and 40% glycerol

Research Areas: Immunology

Storage & Shipping: Store at -20°C. Avoid repeated freezing and thawing



Immunohistochemistry analysis of paraffin embedded Human tonsil tissue using 213416(CCL26 Antibody) at a dilution of 1/40(Secreted).



In comparison with the IHC on the left, the same paraffin-embedded Human tonsil tissue is first treated with the synthetic peptide and then with 213416(Anti-CCL26 Antibody) at dilution 1/40.



Product Description

Pioneering GTPase and Oncogene Product Development since 2010
