

CCKAR RABBIT PAB

Cat.#: S219798

Product Name: Anti-CCKAR Rabbit Polyclonal Antibody

Synonyms: CCK-A, CCKRA, CCK1-R

UNIPROT ID: P32238 (Gene Accession - NP_000721)

Background: This gene encodes a G-protein coupled receptor that binds non-sulfated members of the cholecystokinin (CCK) family of peptide hormones. This receptor is a major physiologic mediator of pancreatic enzyme secretion and smooth muscle contraction of the gallbladder and stomach. In the central and peripheral nervous system this receptor regulates satiety and the release of beta-endorphin and dopamine.

Immunogen: Synthetic peptide of human CCKAR

Applications: ELISA, IHC

Recommended Dilutions: IHC: Oct-50; ELISA: 1000-2000

Host Species: Rabbit

Clonality: Rabbit Polyclonal

Isotype: Immunogen-specific rabbit IgG

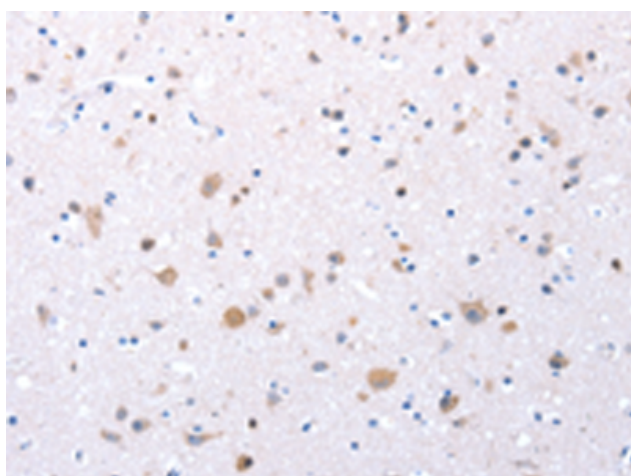
Purification: Antigen affinity purification

Species Reactivity: Human

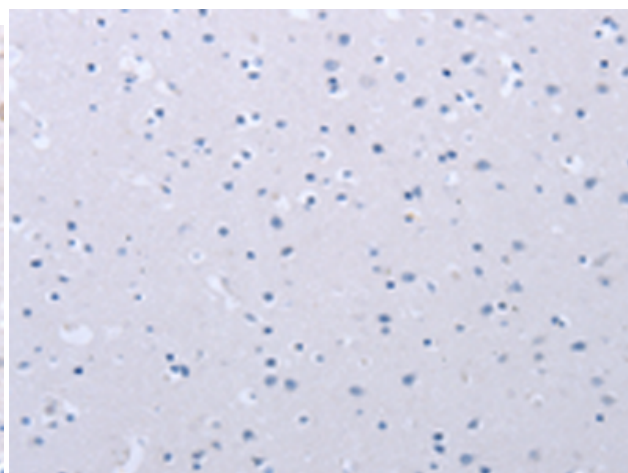
Constituents: PBS (without Mg²⁺ and Ca²⁺), pH 7.4, 150 mM NaCl, 0.05% Sodium Azide and 40% glycerol

Research Areas: Metabolism, Neuroscience

Storage & Shipping: Store at -20°C. Avoid repeated freezing and thawing



Immunohistochemistry analysis of paraffin embedded Human brain tissue using 219798(CCKAR Antibody) at a dilution of 1/20(Cytoplasm, Nucleus).



In comparison with the IHC on the left, the same paraffin-embedded Human brain tissue is first treated with the synthetic peptide and then with 219798(Anti-CCKAR Antibody) at dilution 1/20.