

## CCDC85C RABBIT PAB

**Cat.#:** S221686

**Product Name:** Anti-CCDC85C Rabbit Polyclonal Antibody

**Synonyms:**

**UNIPROT ID:** A6NKD9 (Gene Accession - NP\_001138467 )

**Background:** CCDC85C may play an important role in cortical development, especially in the maintenance of radial glia.

**Immunogen:** Synthetic peptide of human CCDC85C

**Applications:** ELISA, WB, IHC

**Recommended Dilutions:** IHC: 30-150;WB: 500-2000;ELISA: 5000-10000

**Host Species:** Rabbit

**Clonality:** Rabbit Polyclonal

**Isotype:** Immunogen-specific rabbit IgG

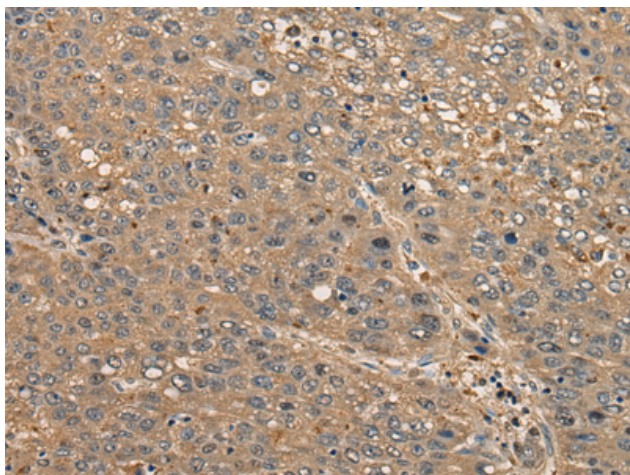
**Purification:** Antigen affinity purification

**Species Reactivity:** Human, Mouse

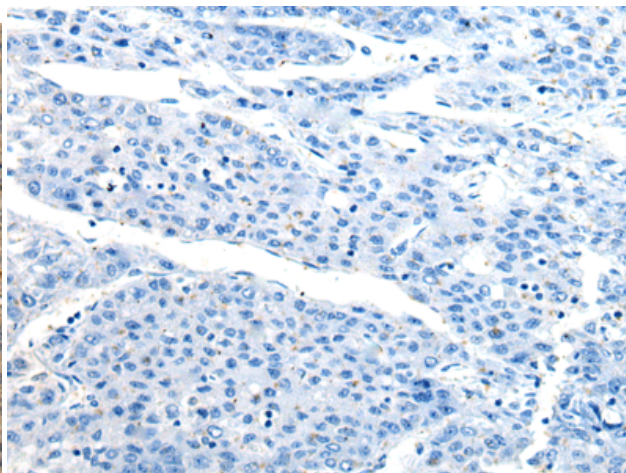
**Constituents:** PBS (without Mg<sup>2+</sup> and Ca<sup>2+</sup>), pH 7.4, 150 mM NaCl, 0.05% Sodium Azide and 40% glycerol

**Research Areas:** Developmental Biology

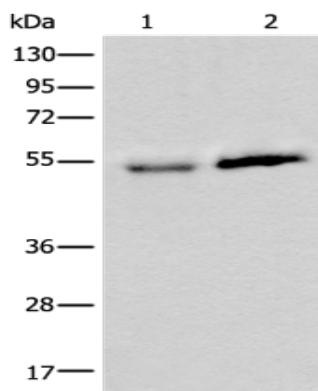
**Storage & Shipping:** Store at -20°C. Avoid repeated freezing and thawing



Immunohistochemistry analysis of paraffin embedded Human liver cancer tissue using 221686(CCDC85C Antibody) at a dilution of 1/30(Cell junction).



In comparison with the IHC on the left, the same paraffin-embedded Human liver cancer tissue is first treated with the synthetic peptide and then with 221686(Anti-CCDC85C Antibody) at dilution 1/30.



Gel: 8%SDS-PAGE, Lysate: 40 µg;  
 Lane 1-2: Human fetal intestines tissue and Human breast cancer tissue lysates;  
 Primary antibody: 221686(CCDC85C Antibody) at dilution 1/400;  
 Secondary antibody: Goat anti rabbit IgG at 1/8000 dilution;  
 Exposure time: 5 minutes