

CCDC113 RABBIT PAB

Cat.#: S218438

Product Name: Anti-CCDC113 Rabbit Polyclonal Antibody

Synonyms: HSPC065

UNIPROT ID: Q9H0I3 (Gene Accession - BC126445)

Background: Component of centriolar satellites contributing to primary cilium formation.

Immunogen: Fusion protein of human CCDC113

Applications: ELISA, IHC

Recommended Dilutions: IHC: 50-300; ELISA: 5000-10000

Host Species: Rabbit

Clonality: Rabbit Polyclonal

Isotype: Immunogen-specific rabbit IgG

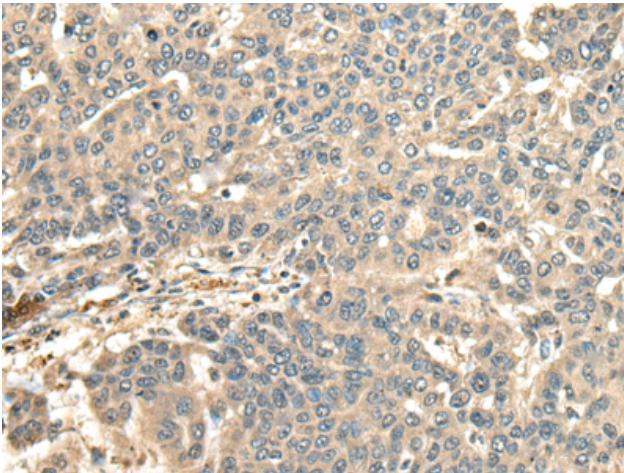
Purification: Antigen affinity purification

Species Reactivity: Human, Mouse

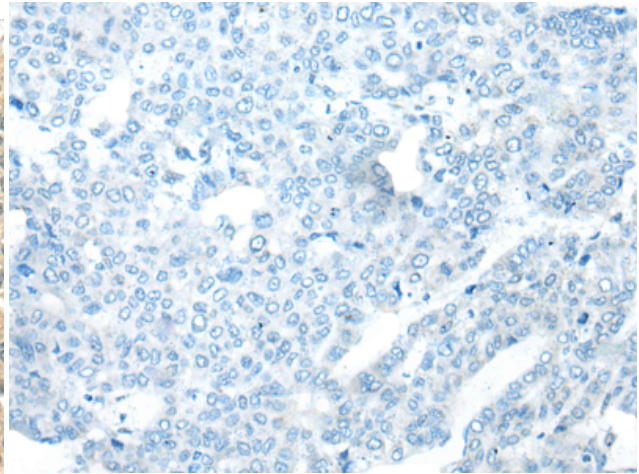
Constituents: PBS (without Mg²⁺ and Ca²⁺), pH 7.4, 150 mM NaCl, 0.05% Sodium Azide and 40% glycerol

Research Areas: Cell Biology

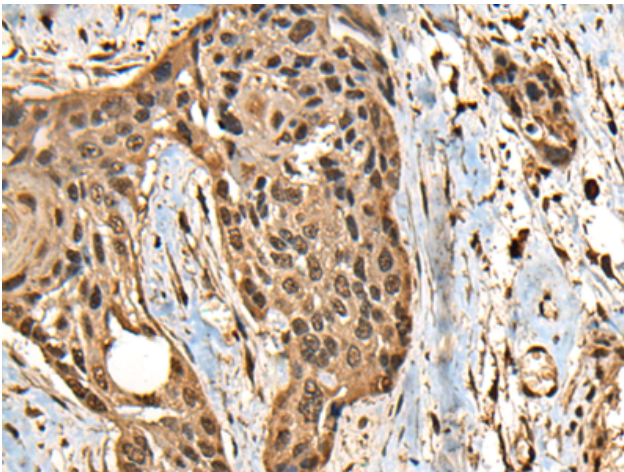
Storage & Shipping: Store at -20°C. Avoid repeated freezing and thawing



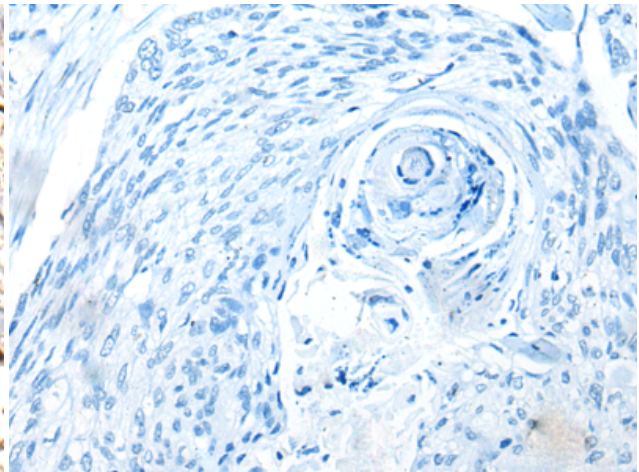
Immunohistochemistry analysis of paraffin embedded Human liver cancer tissue using 218438(CCDC113 Antibody) at a dilution of 1/65(Cytoplasm or Nucleus).



In comparison with the IHC on the left, the same paraffin-embedded Human liver cancer tissue is first treated with the fusion protein and then with 218438(Anti-CCDC113 Antibody) at dilution 1/65.



The image on the left is immunohistochemistry of paraffin-embedded Human esophagus cancer tissue using 218438(Anti-CCDC113 Antibody) at a dilution of 1/65.



In comparison with the IHC on the left, the same paraffin-embedded Human esophagus cancer tissue is first treated with fusion protein and then with D224433(Anti-CCDC113 Antibody) at dilution 1/65.