

## CCDC112 RABBIT PAB

**Cat.#:** S218437

**Product Name:** Anti-CCDC112 Rabbit Polyclonal Antibody

**Synonyms:** MBC1

**UNIPROT ID:** Q8NEF3 (Gene Accession - BC031242 )

**Background:** CCDC112 (coiled-coil domain containing 112), also known as MBC1 (mutated in bladder cancer 1), is a 446 amino acid protein. The gene encoding CCDC112 is located on chromosome 5. Due to alternative splicing events, CCDC112 exists as two isoforms. Chromosome 5 comprises about 6% of human genomic DNA and contains 181 million base pairs encoding around 1,000 genes. It is associated with Cockayne syndrome through the ERCC8 gene and familial adenomatous polyposis through the adenomatous polyposis coli (APC) tumor suppressor gene. Treacher Collins syndrome is also chromosome 5 associated and is caused by insertions or deletions within the TCOF1 gene. Deletion of the p arm of chromosome 5 leads to Cri du chat syndrome. Deletion of 5q or chromosome 5 altogether is common in therapy-related acute myelogenous leukemias and myelodysplastic syndrome.

**Immunogen:** Fusion protein of human CCDC112

**Applications:** ELISA, IHC

**Recommended Dilutions:** IHC: 40-200; ELISA: 5000-10000

**Host Species:** Rabbit

**Clonality:** Rabbit Polyclonal

**Isotype:** Immunogen-specific rabbit IgG

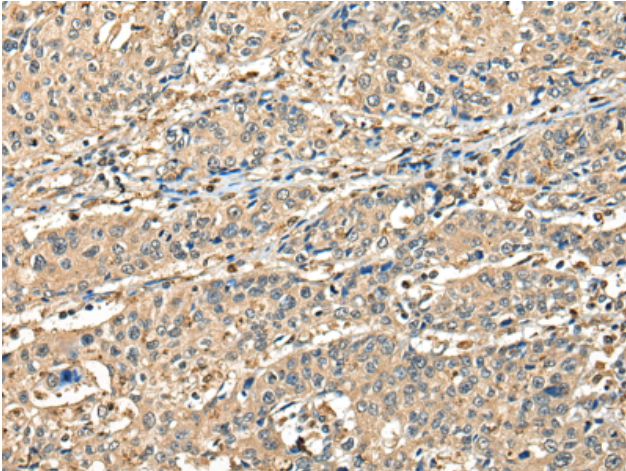
**Purification:** Antigen affinity purification

**Species Reactivity:** Human, Mouse

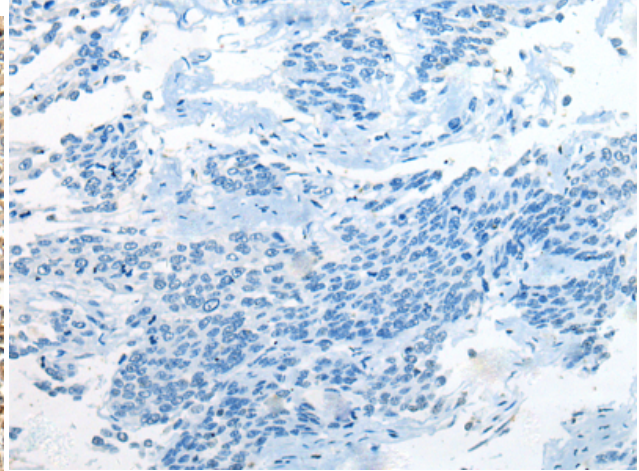
**Constituents:** PBS (without Mg<sup>2+</sup> and Ca<sup>2+</sup>), pH 7.4, 150 mM NaCl, 0.05% Sodium Azide and 40% glycerol

**Research Areas:** Cell Biology

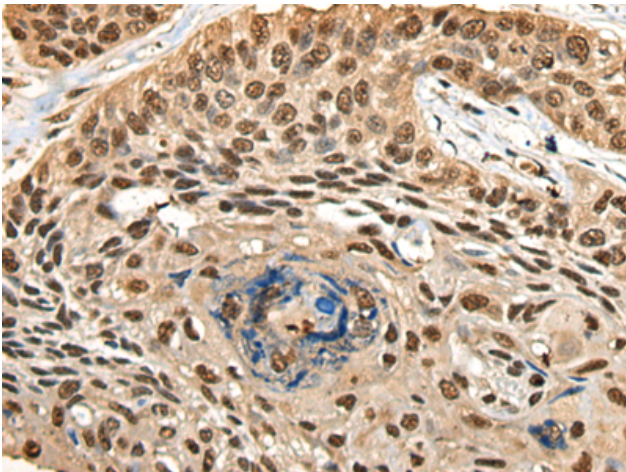
**Storage & Shipping:** Store at -20°C. Avoid repeated freezing and thawing



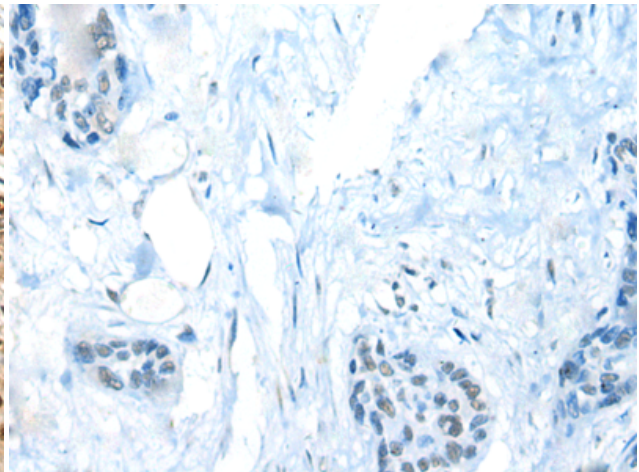
Immunohistochemistry analysis of paraffin embedded Human prostate cancer tissue using 218437 (CCDC112 Antibody) at a dilution of 1/45 (Cytoplasm or Nucleus).



In comparison with the IHC on the left, the same paraffin-embedded Human prostate cancer tissue is first treated with the fusion protein and then with 218437 (Anti-CCDC112 Antibody) at dilution 1/45.



The image on the left is immunohistochemistry of paraffin-embedded Human esophagus cancer tissue using 218437 (Anti-CCDC112 Antibody) at a dilution of 1/45.



In comparison with the IHC on the left, the same paraffin-embedded Human esophagus cancer tissue is first treated with fusion protein and then with D224432 (Anti-CCDC112 Antibody) at dilution 1/45.