

CBX8 RABBIT PAB

Cat.#: S216401

Product Name: Anti-CBX8 Rabbit Polyclonal Antibody

Synonyms: PC3; RC1

UNIPROT ID: Q9HC52 (Gene Accession - BC009376)

Background: Component of a Polycomb group (PcG) multiprotein PRC1-like complex, a complex class required to maintain the transcriptionally repressive state of many genes, including Hox genes, throughout development. PcG PRC1 complex acts via chromatin remodeling and modification of histones; it mediates monoubiquitination of histone H2A 'Lys-119', rendering chromatin heritably changed in its expressibility.

Immunogen: Fusion protein of human CBX8

Applications: ELISA, WB, IHC

Recommended Dilutions: IHC: 50-200;WB: 500-2000;ELISA: 5000-10000

Host Species: Rabbit

Clonality: Rabbit Polyclonal

Isotype: Immunogen-specific rabbit IgG

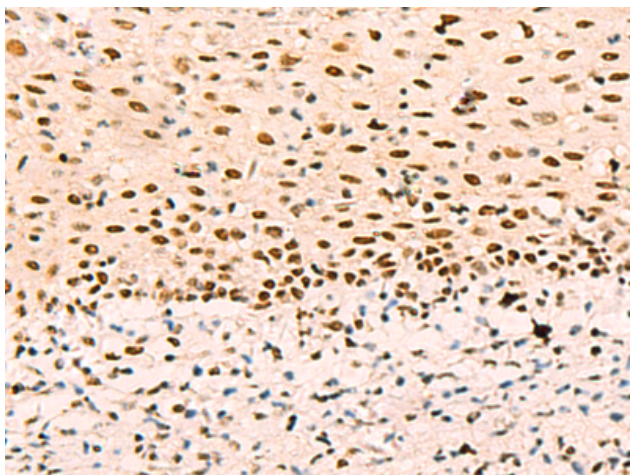
Purification: Antigen affinity purification

Species Reactivity: Human

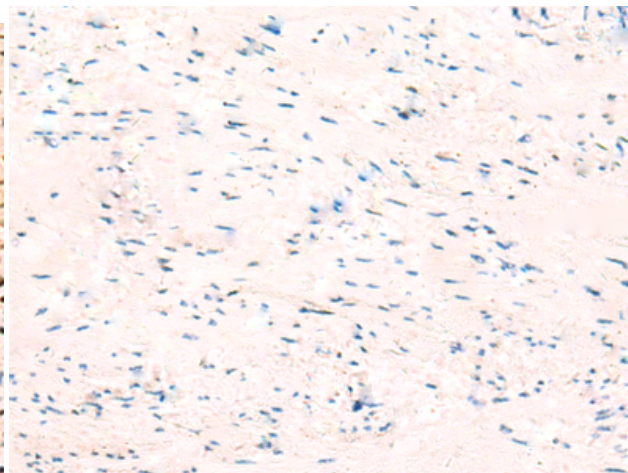
Constituents: PBS (without Mg²⁺ and Ca²⁺), pH 7.4, 150 mM NaCl, 0.05% Sodium Azide and 40% glycerol

Research Areas: Epigenetics and Nuclear Signaling

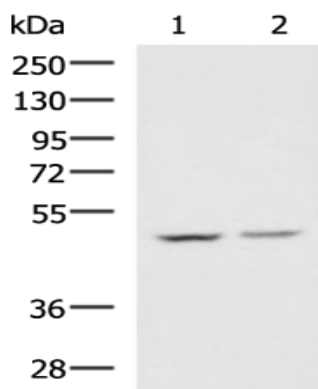
Storage & Shipping: Store at -20°C. Avoid repeated freezing and thawing



Immunohistochemistry analysis of paraffin embedded Human cervical cancer tissue using 216401(CBX8 Antibody) at a dilution of 1/65(Nucleus).



In comparison with the IHC on the left, the same paraffin-embedded Human cervical cancer tissue is first treated with the fusion protein and then with 216401(Anti-CBX8 Antibody) at dilution 1/65.



Gel: 8%SDS-PAGE, Lysate: 40 µg;
Lane 1-2: 293T and 231 cell lysates;
Primary antibody: 216401(CBX8 Antibody) at dilution 1/950;
Secondary antibody: HRP-conjugated Goat anti rabbit IgG at 1/5000 dilution;
Exposure time: 5 seconds