

CBX7 RABBIT PAB

Cat.#: S221185

Product Name: Anti-CBX7 Rabbit Polyclonal Antibody

Synonyms:

UNIPROT ID: O95931 (Gene Accession - NP_783640)

Background: This gene encodes a protein that contains the CHROMO (CHROMatin Organization MODifier) domain. The encoded protein is a component of the Polycomb repressive complex 1 (PRC1), and is thought to control the lifespan of several normal human cells.

Immunogen: Synthetic peptide of human CBX7

Applications: ELISA, WB, IHC

Recommended Dilutions: IHC: 25-50;WB: 500-2000;ELISA: 5000-10000

Host Species: Rabbit

Clonality: Rabbit Polyclonal

Isotype: Immunogen-specific rabbit IgG

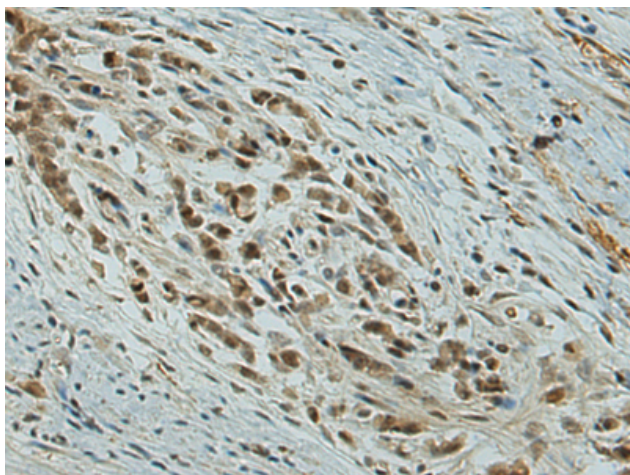
Purification: Antigen affinity purification

Species Reactivity: Human, Mouse, Rat

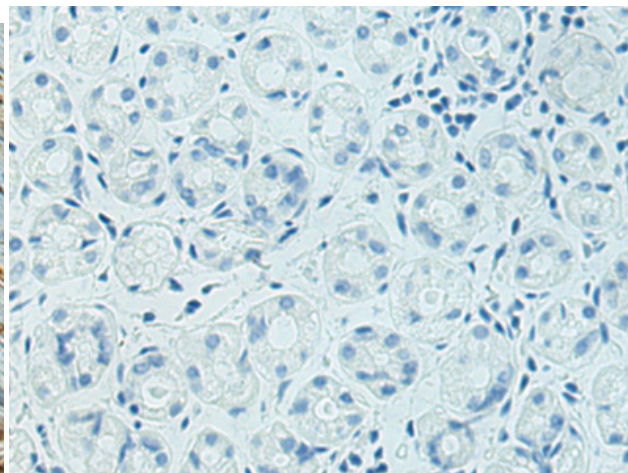
Constituents: PBS (without Mg²⁺ and Ca²⁺), pH 7.4, 150 mM NaCl, 0.05% Sodium Azide and 40% glycerol

Research Areas: Epigenetics and Nuclear Signaling

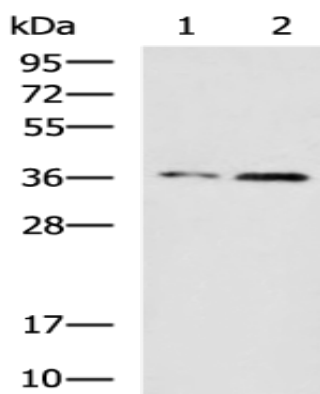
Storage & Shipping: Store at -20°C. Avoid repeated freezing and thawing



Immunohistochemistry analysis of paraffin embedded Human gastric cancer tissue using 221185(CBX7 Antibody) at a dilution of 1/25(Nucleus).



In comparison with the IHC on the left, the same paraffin-embedded Human gastric cancer tissue is first treated with the synthetic peptide and then with 221185(Anti-CBX7 Antibody) at dilution 1/25.



Gel: 12%SDS-PAGE, Lysate: 40 µg;
Lane 1-2: K562 and TM4 cell lysates;
Primary antibody: 221185(CBX7 Antibody) at dilution 1/650;
Secondary antibody: HRP-conjugated Goat anti rabbit IgG at 1/5000 dilution;
Exposure time: 3 minutes