

CBX3 RABBIT PAB

Cat.#: S213601

Product Name: Anti-CBX3 Rabbit Polyclonal Antibody

Synonyms: HECH; HPI-GAMMA; HPIHs-gamma

UNIPROT ID: Q13185 (Gene Accession - NP_009207)

Background: At the nuclear envelope, the nuclear lamina and heterochromatin are adjacent to the inner nuclear membrane. The protein encoded by this gene binds DNA and is a component of heterochromatin. This protein also can bind lamin B receptor, an integral membrane protein found in the inner nuclear membrane. The dual binding functions of the encoded protein may explain the association of heterochromatin with the inner nuclear membrane. This protein binds histone H3 tails methylated at Lys-9 sites. This protein is also recruited to sites of ultraviolet-induced DNA damage and double-strand breaks.

Immunogen: Synthetic peptide of human CBX3

Applications: ELISA, WB, IHC

Recommended Dilutions: IHC: 50-200;WB: 500-2000;ELISA: 2000-5000

Host Species: Rabbit

Clonality: Rabbit Polyclonal

Isotype: Immunogen-specific rabbit IgG

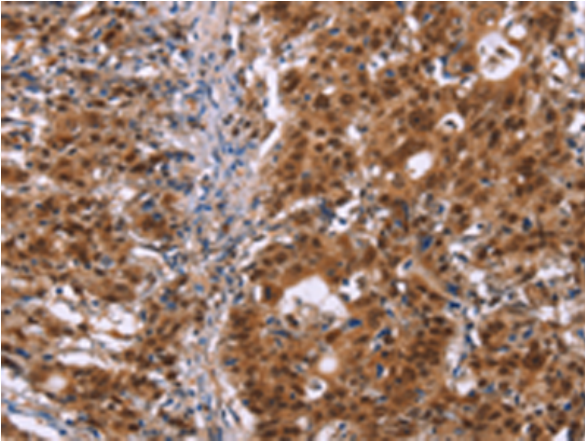
Purification: Antigen affinity purification

Species Reactivity: Human, Mouse

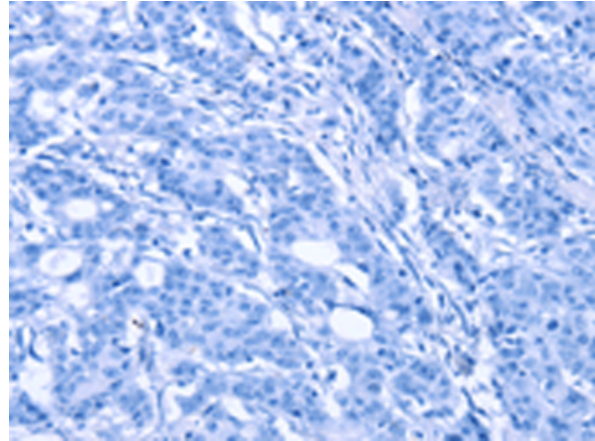
Constituents: PBS (without Mg²⁺ and Ca²⁺), pH 7.4, 150 mM NaCl, 0.05% Sodium Azide and 40% glycerol

Research Areas: Epigenetics and Nuclear Signaling

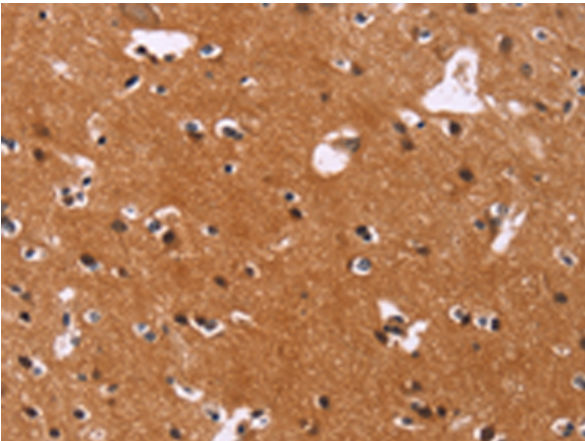
Storage & Shipping: Store at -20°C. Avoid repeated freezing and thawing



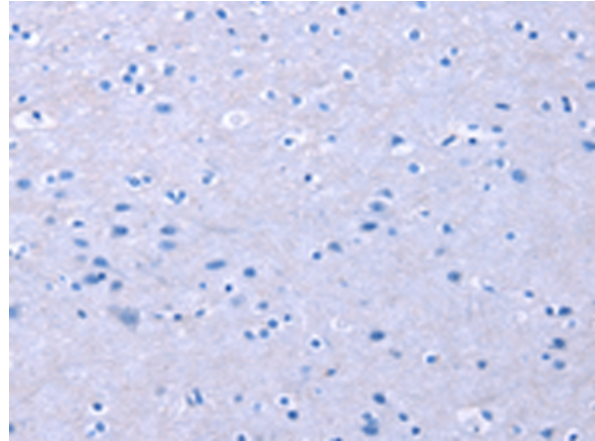
Immunohistochemistry analysis of paraffin embedded Human gastric cancer tissue using 213601(CBX3 Antibody) at a dilution of 1/40(Nucleus).



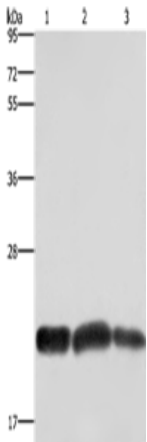
In comparison with the IHC on the left, the same paraffin-embedded Human gastric cancer tissue is first treated with the synthetic peptide and then with 213601(Anti-CBX3 Antibody) at dilution 1/40.



The image on the left is immunohistochemistry of paraffin-embedded Human brain tissue using 213601(Anti-CBX3 Antibody) at a dilution of 1/40.



In comparison with the IHC on the left, the same paraffin-embedded Human brain tissue is first treated with synthetic peptide and then with D160500(Anti-CBX3 Antibody) at dilution 1/40.



Gel: 10%SDS-PAGE, Lysate: 40 µg;
 Lane 1-3: A375 cells, Raji cells, human fetal brain tissue;
 Primary antibody: 213601(CBX3 Antibody) at dilution 1/600;
 Secondary antibody: Goat anti rabbit IgG at 1/8000 dilution;
 Exposure time: 1 second



Product Description

Pioneering GTPase and Oncogene Product Development since 2010
