

CBX2 RABBIT PAB

Cat.#: S210202

Product Name: Anti-CBX2 Rabbit Polyclonal Antibody

Synonyms: M33; CDCA6; SRXY5

UNIPROT ID: Q14781 (Gene Accession - BC004252)

Background: This gene encodes a component of the polycomb multiprotein complex which is required to maintain the transcriptionally repressive state of many genes throughout development via chromatin remodeling and modification of histones. Disruption of this gene in mice results in male-to-female gonadal sex reversal. Mutations in this gene are also associated with gonadal dysgenesis in humans. Alternatively spliced transcript variants encoding different isoforms have been noted for this gene.

Immunogen: Fusion protein of human CBX2

Applications: ELISA, WB, IHC

Recommended Dilutions: IHC: 50-100;WB: 500-2000;ELISA: 5000-10000

Host Species: Rabbit

Clonality: Rabbit Polyclonal

Isotype: Immunogen-specific rabbit IgG

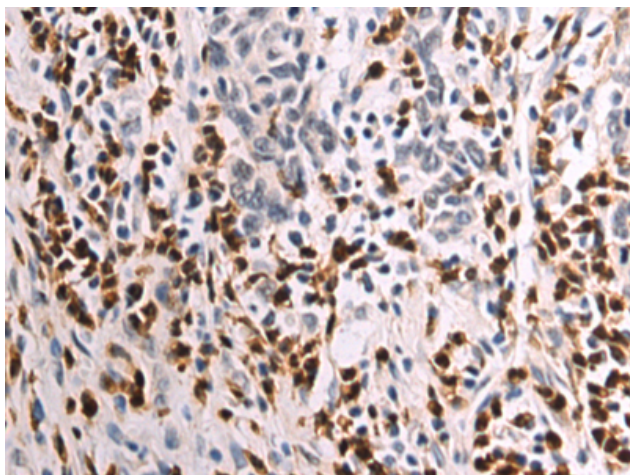
Purification: Antigen affinity purification

Species Reactivity: Human

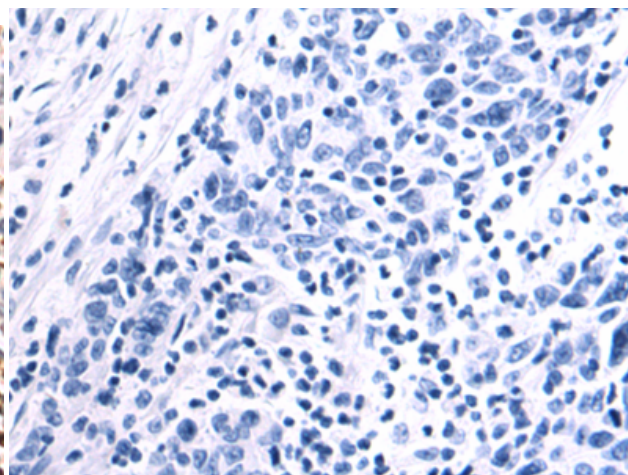
Constituents: PBS (without Mg²⁺ and Ca²⁺), pH 7.4, 150 mM NaCl, 0.05% Sodium Azide and 40% glycerol

Research Areas: Epigenetics and Nuclear Signaling

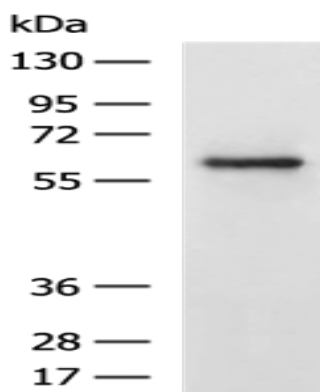
Storage & Shipping: Store at -20°C. Avoid repeated freezing and thawing



Immunohistochemistry analysis of paraffin embedded Human gastric cancer tissue using 210202(CBX2 Antibody) at a dilution of 1/55(Nucleus).



In comparison with the IHC on the left, the same paraffin-embedded Human gastric cancer tissue is first treated with the fusion protein and then with 210202(Anti-CBX2 Antibody) at dilution 1/55.



Gel: 8%SDS-PAGE, Lysate: 40 μ g;
Lane: A431 cell lysate;
Primary antibody: 210202(CBX2 Antibody) at dilution 1/600;
Secondary antibody: HRP-conjugated Goat anti rabbit IgG at 1/5000 dilution;
Exposure time: 30 seconds