

CBWD1 RABBIT PAB

Cat.#: S211838

Product Name: Anti-CBWD1 Rabbit Polyclonal Antibody

Synonyms: COBP

UNIPROT ID: Q9BRT8 (Gene Accession - BC132759)

Background: The function of this protein remains unknown.

Immunogen: Fusion protein of human CBWD1

Applications: ELISA, IHC

Recommended Dilutions: IHC: 25-100; ELISA: 5000-10000

Host Species: Rabbit

Clonality: Rabbit Polyclonal

Isotype: Immunogen-specific rabbit IgG

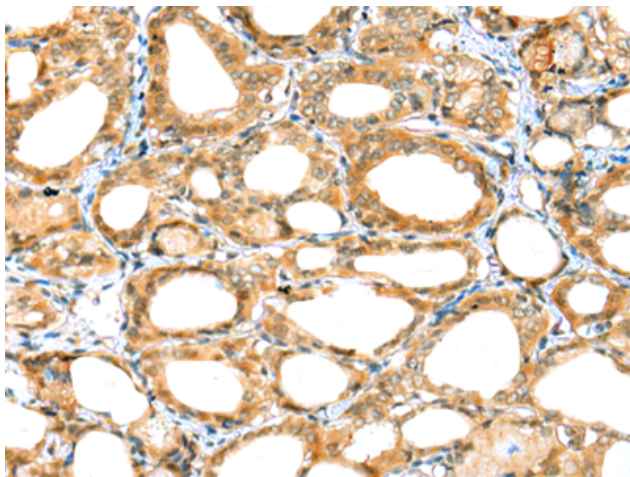
Purification: Antigen affinity purification

Species Reactivity: Human

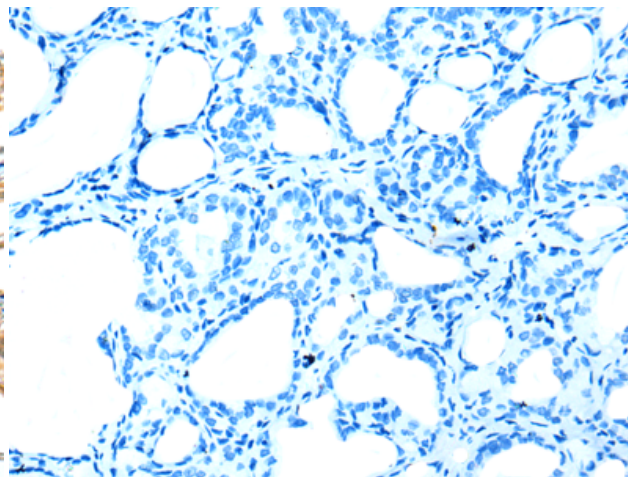
Constituents: PBS (without Mg²⁺ and Ca²⁺), pH 7.4, 150 mM NaCl, 0.05% Sodium Azide and 40% glycerol

Research Areas: Cell Biology, Neuroscience

Storage & Shipping: Store at -20°C. Avoid repeated freezing and thawing



Immunohistochemistry analysis of paraffin embedded Human thyroid cancer tissue using 211838 (CBWD1 Antibody) at a dilution of 1/20 (Cytoplasm).



In comparison with the IHC on the left, the same paraffin-embedded Human thyroid cancer tissue is first treated with the fusion protein and then with 211838 (Anti-CBWD1 Antibody) at dilution 1/20.