

CAVEOLIN 1 RABBIT MAB

Cat.#: N261651

Product Name: Anti-Caveolin 1 Rabbit Monoclonal Antibody

Synonyms: CAV1; CAV; Caveolin-1

UNIPROT ID: Q03135

Background: Caveolin-1 may act as a scaffolding protein within caveolar membranes. Interacts directly with G-protein alpha subunits and can functionally regulate their activity (By similarity). Involved in the costimulatory signal essential for T-cell receptor (TCR)-mediated T-cell activation. Its binding to DPP4 induces T-cell proliferation and NF-kappa-B activation in a T-cell receptor/CD3-dependent manner. Recruits CTNNB1 to caveolar membranes and may regulate CTNNB1-mediated signaling through the Wnt pathway.

Immunogen: Recombinant protein of human Caveolin-1

Applications: WB,IHC-F,IHC-P,ICC/IF,IP

Recommended Dilutions: WB: 1/500-1/1000 IHC: 1/50-1/100 IF: 1/50-1/200 IP: 1/20

Host Species: Rabbit

Clonality: Rabbit Monoclonal

Clone ID: R05-6C3

MW: Calculated MW: 20 kDa; Observed MW: 20 kDa

Isotype: IgG

Purification: Affinity Purified

Species Reactivity: Human

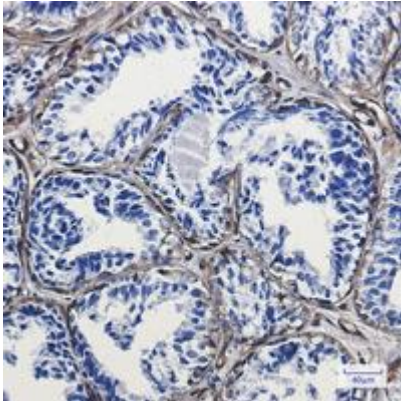
Conjugation: Unconjugated

Modification: Unmodified

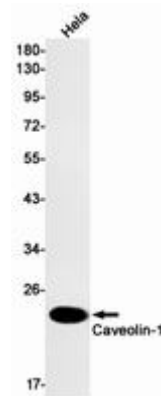
Constituents: PBS (without Mg²⁺ and Ca²⁺), pH 7.3 containing 50% glycerol, 0.5% BSA and 0.02% sodium azide

Research Areas: Cardiovascular

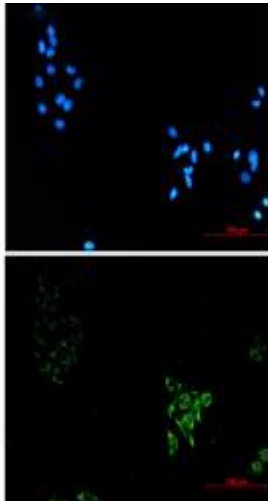
Storage & Shipping: Store at -20°C. Avoid repeated freezing and thawing



Immunohistochemistry analysis of paraffin-embedded Human breast cancer using Caveolin1 antibody. High-pressure and temperature Sodium Citrate pH 6.0 was used for antigen retrieval.



Western blot analysis of Caveolin1 in Hela lysates using Caveolin 1 antibody.



Immunocytochemistry analysis of Caveolin1 (green) in Hela using Caveolin1 antibody, and DAPI (blue)