

CATALASE RABBIT MAB

Cat.#: N261969

Product Name: Anti-Catalase Rabbit Monoclonal Antibody

Synonyms: CasI; CAT; Catalase; Csl

UNIPROT ID: P04040

Background: Catalase catalyzes the conversion of hydrogen peroxide to water and oxygen. Research studies show that overexpression of this antioxidant enzyme increases the ability of pancreatic β -cells to scavenge reactive oxygen species (ROS), thereby protecting pancreatic β -cells from oxidative stress.

Immunogen: A synthetic peptide of human Catalase

Applications: WB,IHC-F,IHC-P,ICC/IF

Recommended Dilutions: WB: 1/500-1/1000 IHC: 1/50-1/100 IF: 1/50-1/200

Host Species: Rabbit

Clonality: Rabbit Monoclonal

Clone ID: R05-5D9

MW: Calculated MW: 60 kDa; Observed MW: 60 kDa

Isotype: IgG

Purification: Affinity Purified

Species Reactivity: Human

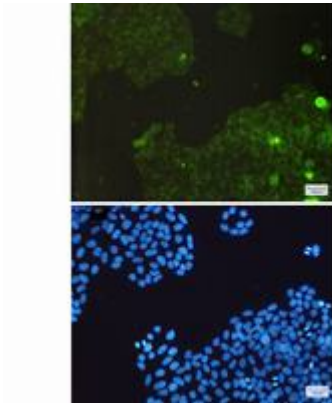
Conjugation: Unconjugated

Modification: Unmodified

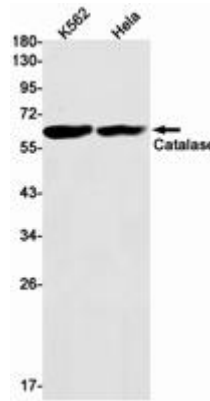
Constituents: PBS (without Mg^{2+} and Ca^{2+}), pH 7.3 containing 50% glycerol, 0.5% BSA and 0.02% sodium azide

Research Areas: Tags & Cell Markers

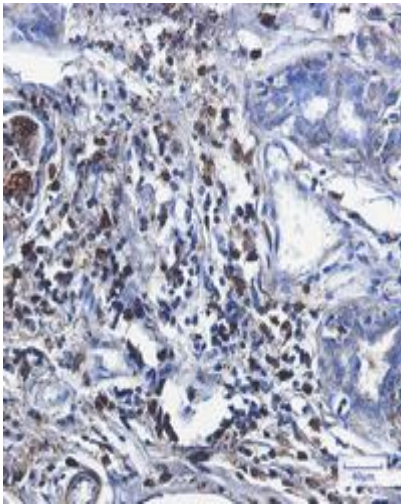
Storage & Shipping: Store at $-20^{\circ}C$. Avoid repeated freezing and thawing



Immunocytochemistry analysis of Catalase (green) in HeLa using Catalase antibody, and DAPI (blue)



Western blot analysis of Catalase in K562, HeLa lysates using Catalase antibody.



Immunohistochemistry analysis of paraffin-embedded Human breast cancer using Catalase antibody. High-pressure and temperature Sodium Citrate pH 6.0 was used for antigen retrieval.