

## CASPASE 9 RABBIT MAB

**Cat.#:** N261685

**Product Name:** Anti-Caspase 9 Rabbit Monoclonal Antibody

**Synonyms:** CASP9; MCH6; Caspase-9; CASP-9; Apoptotic protease Mch-6; Apoptotic protease-activating factor 3; APAF-3; ICE-like apoptotic protease 6; ICE-LAP6

**UNIPROT ID:** P55211

**Background:** Caspase-9 (ICE-LAP6, Mch6) is an important member of the cysteine aspartic acid protease (caspase) family. Upon apoptotic stimulation, cytochrome c released from mitochondria associates with the 47 kDa procaspase-9/Apaf 1. Apaf-1 mediated activation of caspase-9 involves intrinsic proteolytic processing resulting in cleavage at Asp315 and producing a p35 subunit.

**Immunogen:** Recombinant protein of human Caspase-9

**Applications:** WB,IP

**Recommended Dilutions:** WB: 1/500-1/1000 IP: 1/20

**Host Species:** Rabbit

**Clonality:** Rabbit Monoclonal

**Clone ID:** R09-4C4

**MW:** Calculated MW: 46 kDa; Observed MW: 46 kDa

**Isotype:** IgG

**Purification:** Affinity Purified

**Species Reactivity:** Human,Mouse

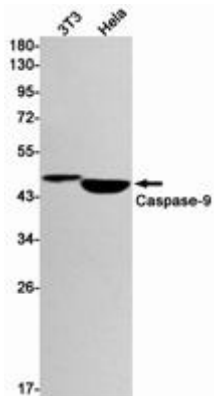
**Conjugation:** Unconjugated

**Modification:** Unmodified

**Constituents:** PBS (without Mg<sup>2+</sup> and Ca<sup>2+</sup>), pH 7.3 containing 50% glycerol, 0.5% BSA and 0.02% sodium azide

**Research Areas:** apoptosis - Caspase family

**Storage & Shipping:** Store at -20°C. Avoid repeated freezing and thawing



Western blot analysis of Caspase9 in 3T3, HeLa lysates using Caspase 9 antibody.