

CASPASE 7 RABBIT MAB

Cat.#: N263252

Product Name: Anti-Caspase 7 Rabbit Monoclonal Antibody

Synonyms: MCH3; CMH-1; LICE2; CASP-7; ICE-LAP3

UNIPROT ID: P55210

Background: Belongs to the peptidase C14A family. Involved in the activation cascade of caspases responsible for apoptosis execution. Cleaves and activates sterol regulatory element binding proteins (SREBPs). Proteolytically cleaves poly(ADP-ribose) polymerase (PARP) at a '216-Asp--Gly-217' bond. Overexpression promotes programmed cell death.

Immunogen: Recombinant protein of human Caspase-7

Applications: WB,IHC-P

Recommended Dilutions: WB: 1/500-1/1000 IHC: 1/50-1/100

Host Species: Rabbit

Clonality: Rabbit Monoclonal

Clone ID: R06-0F6

MW: Calculated MW: 34 kDa; Observed MW: 34 kDa

Isotype: IgG

Purification: Affinity Purified

Species Reactivity: Human,Mouse,Rat

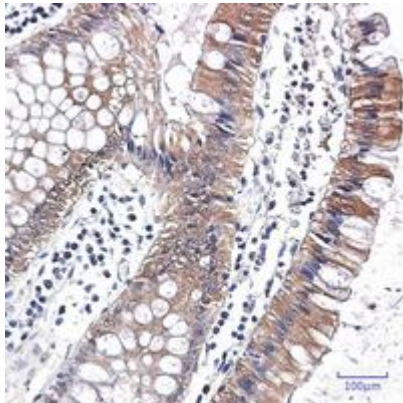
Conjugation: Unconjugated

Modification: Unmodified

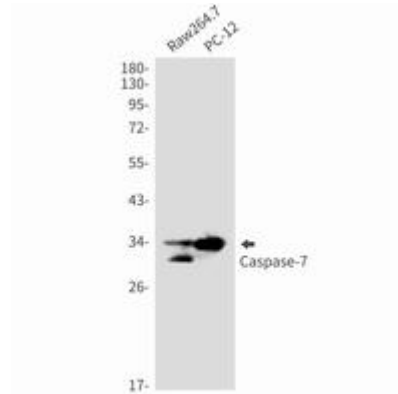
Constituents: PBS (without Mg²⁺ and Ca²⁺), pH 7.3 containing 50% glycerol, 0.5% BSA and 0.02% sodium azide

Research Areas: apoptosis - Caspase family

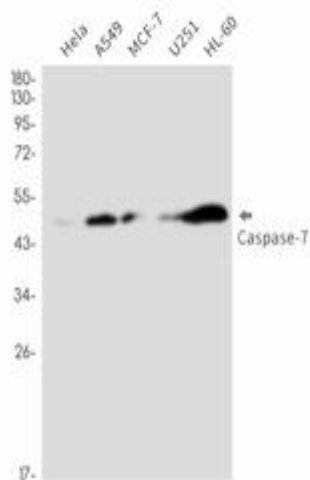
Storage & Shipping: Store at -20°C. Avoid repeated freezing and thawing



Immunohistochemistry analysis of paraffin-embedded Human colon cancer using Caspase7 antibody. High-pressure and temperature Sodium Citrate pH 6.0 was used for antigen retrieval.



Western blot analysis of Caspase7 in Raw264.7, PC-12 lysates using Caspase 7 antibody.



Western blot analysis of Caspase7 in HeLa, A549, MCF-7, U251, HL-60 lysates using Caspase7 antibody.