

## CASPASE 6 RABBIT MAB

**Cat.#:** N263251

**Product Name:** Anti-Caspase 6 Rabbit Monoclonal Antibody

**Synonyms:** CASP6; MCH2; Caspase-6; CASP-6; Apoptotic protease Mch-2

**UNIPROT ID:** P55212

**Background:** Caspase-6 (Mch2) is one of the major executioner caspases functioning in cellular apoptotic processes. Upon apoptotic stimulation, initiator caspases such as caspase-9 are cleaved and activated. The activated upstream caspases further process downstream executioner caspases, such as caspase-3 and caspase-6, by cleaving them into large and small subunits, thereby initiating a caspase cascade leading to apoptosis. One of the major targets for caspase-6 is the membrane associated protein lamin A.

**Immunogen:** A synthetic peptide of human Caspase-6

**Applications:** WB,IHC-P

**Recommended Dilutions:** WB: 1/500-1/1000 IHC: 1/50-1/100

**Host Species:** Rabbit

**Clonality:** Rabbit Monoclonal

**Clone ID:** R01-3A0

**MW:** Calculated MW: 33 kDa; Observed MW: 11,33 kDa

**Isotype:** IgG

**Purification:** Affinity Purified

**Species Reactivity:** Human

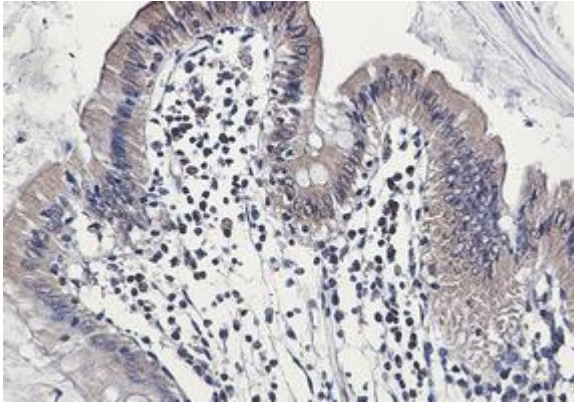
**Conjugation:** Unconjugated

**Modification:** Unmodified

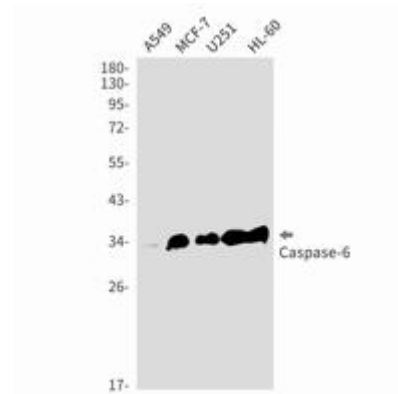
**Constituents:** PBS (without Mg<sup>2+</sup> and Ca<sup>2+</sup>), pH 7.3 containing 50% glycerol, 0.5% BSA and 0.02% sodium azide

**Research Areas:** apoptosis - Caspase family

**Storage & Shipping:** Store at -20°C. Avoid repeated freezing and thawing



Immunohistochemistry analysis of paraffin-embedded Human colon cancer using Caspase6 antibody. High-pressure and temperature Sodium Citrate pH 6.0 was used for antigen retrieval.



Western blot analysis of Caspase6 in A549, MCF-7, U251, HL-60 lysates using Caspase 6 antibody.