

## CASP9 RABBIT PAB

**Cat.#:** S210055

**Product Name:** Anti-CASP9 Rabbit Polyclonal Antibody

**Synonyms:** MCH6, APAF3, APAF-3, PPP1R56, ICE-LAP6

**UNIPROT ID:** P55211 (Gene Accession - BC002452 )

**Background:** This gene encodes a member of the cysteine-aspartic acid protease (caspase) family. Sequential activation of caspases plays a central role in the execution-phase of cell apoptosis. Caspases exist as inactive proenzymes which undergo proteolytic processing at conserved aspartic residues to produce two subunits, large and small, that dimerize to form the active enzyme. This protein is processed by caspase APAF1; this step is thought to be one of the earliest in the caspase activation cascade. Alternative splicing results in two transcript variants which encode different isoforms.

**Immunogen:** Fusion protein of human CASP9

**Applications:** ELISA, IHC

**Recommended Dilutions:** IHC: 50-200; ELISA: 500-5000

**Host Species:** Rabbit

**Clonality:** Rabbit Polyclonal

**Isotype:** Immunogen-specific rabbit IgG

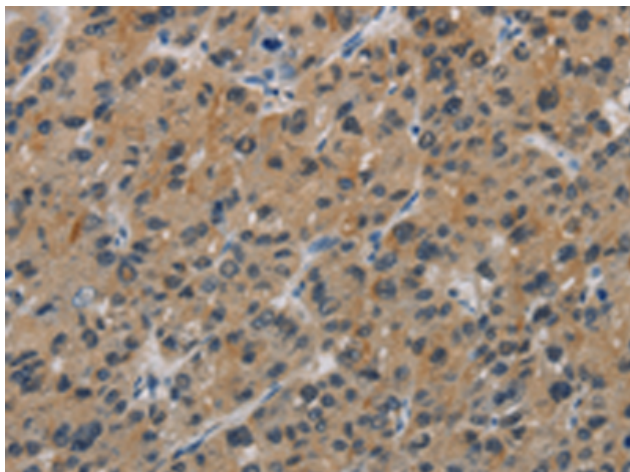
**Purification:** Antigen affinity purification

**Species Reactivity:** Human

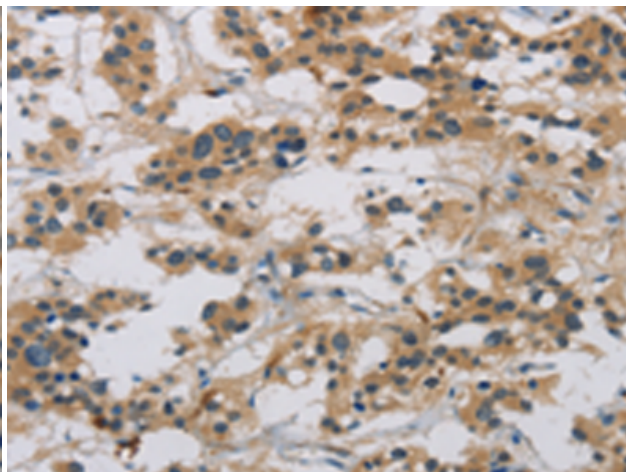
**Constituents:** PBS (without Mg<sup>2+</sup> and Ca<sup>2+</sup>), pH 7.4, 150 mM NaCl, 0.05% Sodium Azide and 40% glycerol

**Research Areas:** Cancer

**Storage & Shipping:** Store at -20°C. Avoid repeated freezing and thawing



Immunohistochemistry analysis of paraffin-embedded Human liver cancer tissue using 210055(CASP9 Antibody) at a dilution of 1/60(Cytoplasm).



Immunohistochemistry analysis of paraffin-embedded Human thyroid cancer tissue using 210055(Anti-CASP9 Antibody) at a dilution of 1/60.