

## CASP3 (ACTIVE) RABBIT PAB

**Cat.#:** S219606

**Product Name:** Anti-CASP3 (active) Rabbit Polyclonal Antibody

**Synonyms:** CPP32; SCA-1; CPP32B

**UNIPROT ID:** P42574 (Gene Accession - NP\_116786 )

**Background:** The protein encoded by this gene is a cysteine-aspartic acid protease that plays a central role in the execution-phase of cell apoptosis. The encoded protein cleaves and inactivates poly(ADP-ribose) polymerase while it cleaves and activates sterol regulatory element binding proteins as well as caspases 6, 7, and 9. This protein itself is processed by caspases 8, 9, and 10. It is the predominant caspase involved in the cleavage of amyloid-beta 4A precursor protein, which is associated with neuronal death in Alzheimer's disease.

**Immunogen:** Synthetic peptide of human CASP3

**Applications:** ELISA, WB, IHC

**Recommended Dilutions:** IHC: 50-200;WB: 1000-5000;ELISA: 5000-10000

**Host Species:** Rabbit

**Clonality:** Rabbit Polyclonal

**Isotype:** Immunogen-specific rabbit IgG

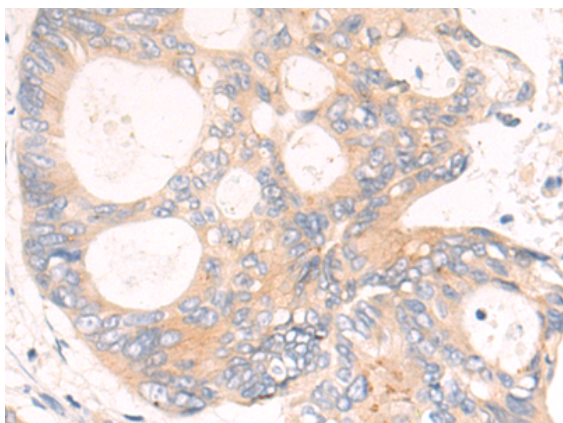
**Purification:** Antigen affinity purification

**Species Reactivity:** Human, Mouse, Rat

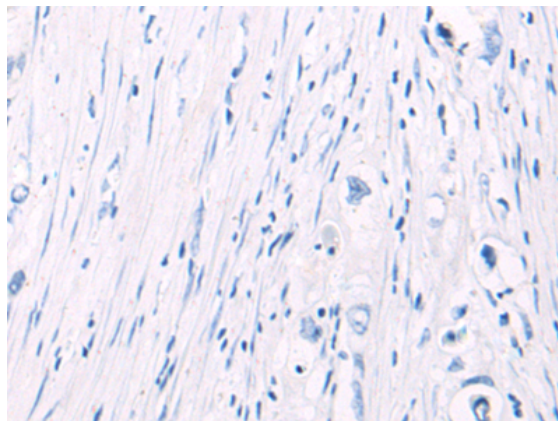
**Constituents:** PBS (without Mg<sup>2+</sup> and Ca<sup>2+</sup>), pH 7.4, 150 mM NaCl, 0.05% Sodium Azide and 40% glycerol

**Research Areas:** Cancer, Cell Biology, Neuroscience

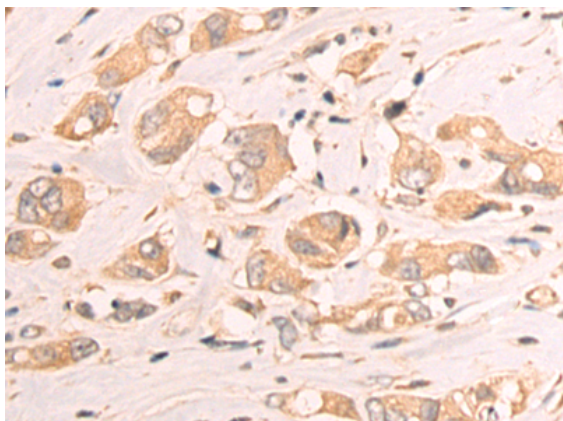
**Storage & Shipping:** Store at -20°C. Avoid repeated freezing and thawing



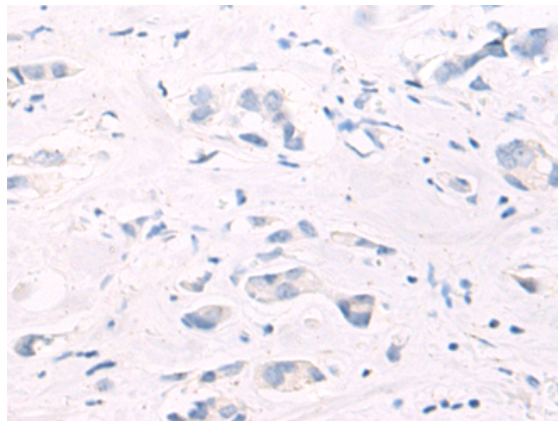
Immunohistochemistry analysis of paraffin embedded Human colorectal cancer tissue using 219606(CASP3 (active) Antibody) at a dilution of 1/50(Cytoplasm).



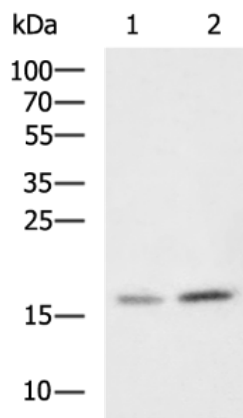
In comparison with the IHC on the left, the same paraffin-embedded Human colorectal cancer tissue is first treated with the synthetic peptide and then with 219606(Anti-CASP3 (Anti-active) Antibody) at dilution 1/50.



The image on the left is immunohistochemistry of paraffin-embedded Human breast cancer tissue using 219606(Anti-CASP3 (Anti-active) Antibody) at a dilution of 1/50.



In comparison with the IHC on the left, the same paraffin-embedded Human breast cancer tissue is first treated with synthetic peptide and then with D260009(Anti-CASP3 (Anti-active) Antibody) at dilution 1/50.



Gel: 12%SDS-PAGE, Lysate: 40 µg;  
 Lane 1-2: MC3T3-E1 apoptotic cells after 48 hours of starvation, THP-1 apoptotic cells after 48 hours of starvation ;  
 Primary antibody: 219606(CASP3 (active) Antibody) at dilution 1/1000;  
 Secondary antibody: HRP-conjugated Goat anti rabbit IgG at 1/5000 dilution;  
 Exposure time: 1 minute



# Product Description

Pioneering GTPase and Oncogene Product Development since 2010

---