

CAPRIN1 RABBIT PAB

Cat.#: S210917

Product Name: Anti-CAPRIN1 Rabbit Polyclonal Antibody

Synonyms: MIIS1; GPIAP1; RNG105; GPIP137; GRIP137; p137GPI

UNIPROT ID: Q14444 (Gene Accession - BC001731)

Background: May regulate the transport and translation of mRNAs of proteins involved in synaptic plasticity in neurons and cell proliferation and migration in multiple cell types. Binds directly and selectively to MYC and CCND2 RNAs. In neuronal cells, directly binds to several mRNAs associated with RNA granules, including BDNF, CAMK2A, CREB1, MAP2, NTRK2 mRNAs, as well as to GRIN1 and KPNB1 mRNAs, but not to rRNAs.

Immunogen: Fusion protein of human CAPRIN1

Applications: ELISA, WB, IHC

Recommended Dilutions: IHC: 50-200;WB: 500-2000;ELISA: 5000-10000

Host Species: Rabbit

Clonality: Rabbit Polyclonal

Isotype: Immunogen-specific rabbit IgG

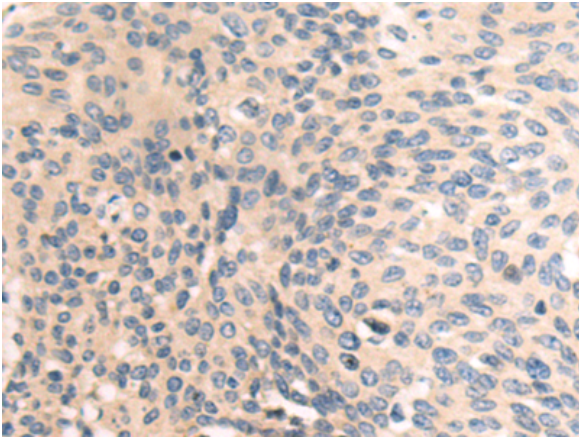
Purification: Antigen affinity purification

Species Reactivity: Human, Mouse, Rat

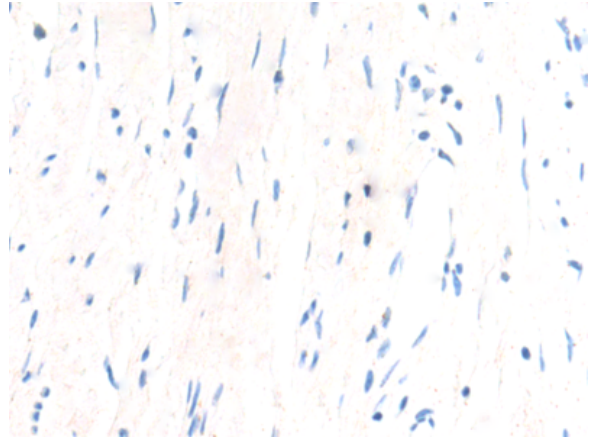
Constituents: PBS (without Mg²⁺ and Ca²⁺), pH 7.4, 150 mM NaCl, 0.05% Sodium Azide and 40% glycerol

Research Areas: Cancer

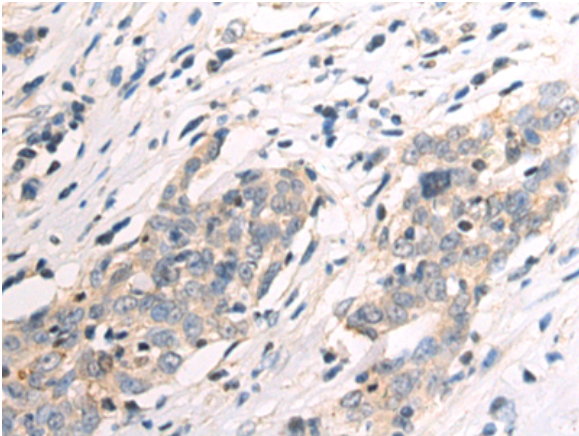
Storage & Shipping: Store at -20°C. Avoid repeated freezing and thawing



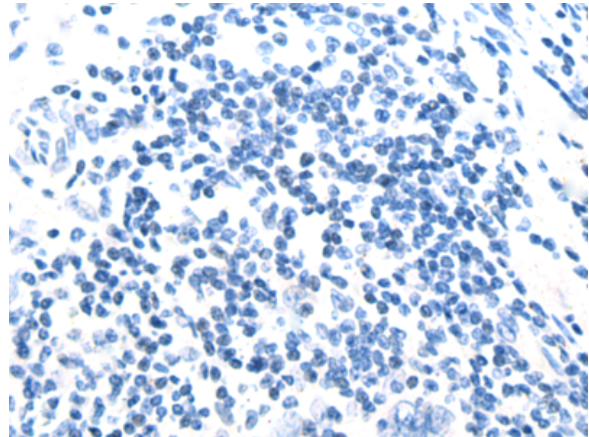
Immunohistochemistry analysis of paraffin embedded Human cervical cancer tissue using 210917(CAPRINI Antibody) at a dilution of 1/50(Cytoplasm).



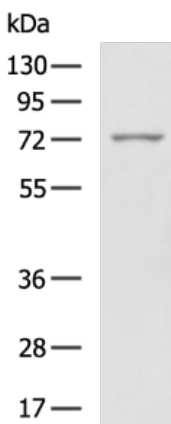
In comparison with the IHC on the left, the same paraffin-embedded Human cervical cancer tissue is first treated with the fusion protein and then with 210917(Anti-CAPRINI Antibody) at dilution 1/50.



The image on the left is immunohistochemistry of paraffin-embedded Human esophagus cancer tissue using 210917(Anti-CAPRINI Antibody) at a dilution of 1/50.



In comparison with the IHC on the left, the same paraffin-embedded Human esophagus cancer tissue is first treated with fusion protein and then with D121882(Anti-CAPRINI Antibody) at dilution 1/50.



Gel: 6%SDS-PAGE, Lysate: 40 µg;
Lane: RAW264.7 cell lysate;
Primary antibody: 210917(CAPRINI Antibody) at dilution 1/600;
Secondary antibody: HRP-conjugated Goat anti rabbit IgG at 1/5000 dilution;
Exposure time: 10 seconds



Product Description

Pioneering GTPase and Oncogene Product Development since 2010
